



April 9, 2026

Daryl Reed, Hydrogeologist  
Montana Department of Environmental Quality  
1225 Cedar St  
P.O. Box 200901  
Helena, MT 59620-0901

**RE: CONTRACT NO. 415008-TO-21, BUTTE MINE FLOODING–MARCH 2026 MONTHLY REPORT, BMFOU  
CONSENT DECREE 02-35-BU-SEH**

Dear Daryl:

Enclosed is the March 2026 monthly report for Contract No. 415008-TO-21, Butte Mine Flooding CD Monitoring. The report is being sent in partial fulfillment of the terms contained in the Butte Mine Flooding Operable Unit Consent Decree-02-35-BU-SEH and briefly discusses the major activities undertaken during the month and presents data from monitoring activities.

Common Sense Engineering and Surveying completed the monthly Berkeley Pit water elevation survey on April 2, 2026; the water elevation was 5355.83. Based on water-level data from mine shafts and deep bedrock wells, the Berkeley Pit pumping project that began on September 26, 2019 continues to control the water-level in the Pit and surrounding bedrock monitoring sites. Since the inception of pumping, the Berkeley Pit water-level has decreased 0.22-ft.

Monitoring well Lex #1 was completed, with pressure transducer installed for continuous water-level monitoring. This site will replace the Lexington Mine in the monitoring program.

Figures referenced in the report are attached at the end of the report. If you have questions about the project, or the enclosed report, do not hesitate to contact me. Electronic copies of the report (text only) and water-level data have been sent to the required parties, per Appendix C of the Consent Decree.

Sincerely,

Ted Duaine  
Hydrogeologist

Enclosures

xc:	Jason Rappe, EPA (all report - elec. only)	Chapin Storrar, CDM (elec. only)
	Mark Thompson, MR (all report - elec. only)	Karen Maloughney, BSB (elec. only)
	Dan Janney, MR (elec. only)	Abby Peltomaa, BSB (elec. only)





## Montana Bureau of Mines and Geology

Loren Burmeister, AR (elec. only)  
Dave Griffis, AR (all report - elec. only)  
Irene Montero, AR (elec. only)  
Rich Keeland, Aspect (elec. only)  
Tammy Gordon, RIPPLE (elec. only)  
Jeremy Fleege, MR (all report - elec. only)  
Steve Walsh (all report – elec. only)  
Garrett Smith, DEQ-HRB (elec. only)  
Katie Garcin-Forba, DEQ (elec. only)  
CTEC (elec. only)  
File

Gary Icopini, MBMG (elec. only)  
Mark Neary, BSB (elec. only)  
Brandon Warner, BSB (elec. only)  
Mark Schaffer, PTS (elec. only)  
Adam Logar, PTS (elec. only)  
Eric Hassler, BSB (elec. only)  
Allie Archer, EPA (all report - elec. only)



**MONTANA**TECH

MBMG Butte Mine Flooding Monthly Report  
BMFOU Consent Decree 02-35-BU-SEH  
Remedial Action–Monitoring Program  
Contract No. 415008-TO-21  
March 2026

The Montana Bureau of Mines and Geology (MBMG) continues to perform monitoring and sampling activities for the Butte Mine Flooding Operable Unit (BMFOU), per the conditions of the 2002 Consent Decree (CD) as outlined in the Remedial Action Monitoring Program. Normal monthly activities include alluvial and bedrock water-level monitoring, monitoring of surface-water flows in the Horseshoe Bend Drainage/Capture System (HsB/CS), HsB/CS water-quality sampling, and report preparation. Drilling and well completion was completed on the bedrock well that will replace the Lexington Mine monitoring site. Continued preparation of the 2025 Data Summary Report and Annual Report. MBBMG personnel continue to assist contractors from the General Services Administration (GSA) with access to the Steward Mine site for data collection related to potential use of mine water for heating the Butte Federal Building. Awaiting guidance from contractors before installation of temperature probes.

**Horseshoe Bend/Capture System**

The implementation of the Berkeley Pit and Discharge Pilot Project (Pilot Project) system and associated water treatment options modified water handling in the HsB drainage/precipitation plant areas. Figure 1 contains the March 2026 flow data, as recorded at the HsB/CS weir. The signal to noise ratio was 42, indicating high quality data collection.

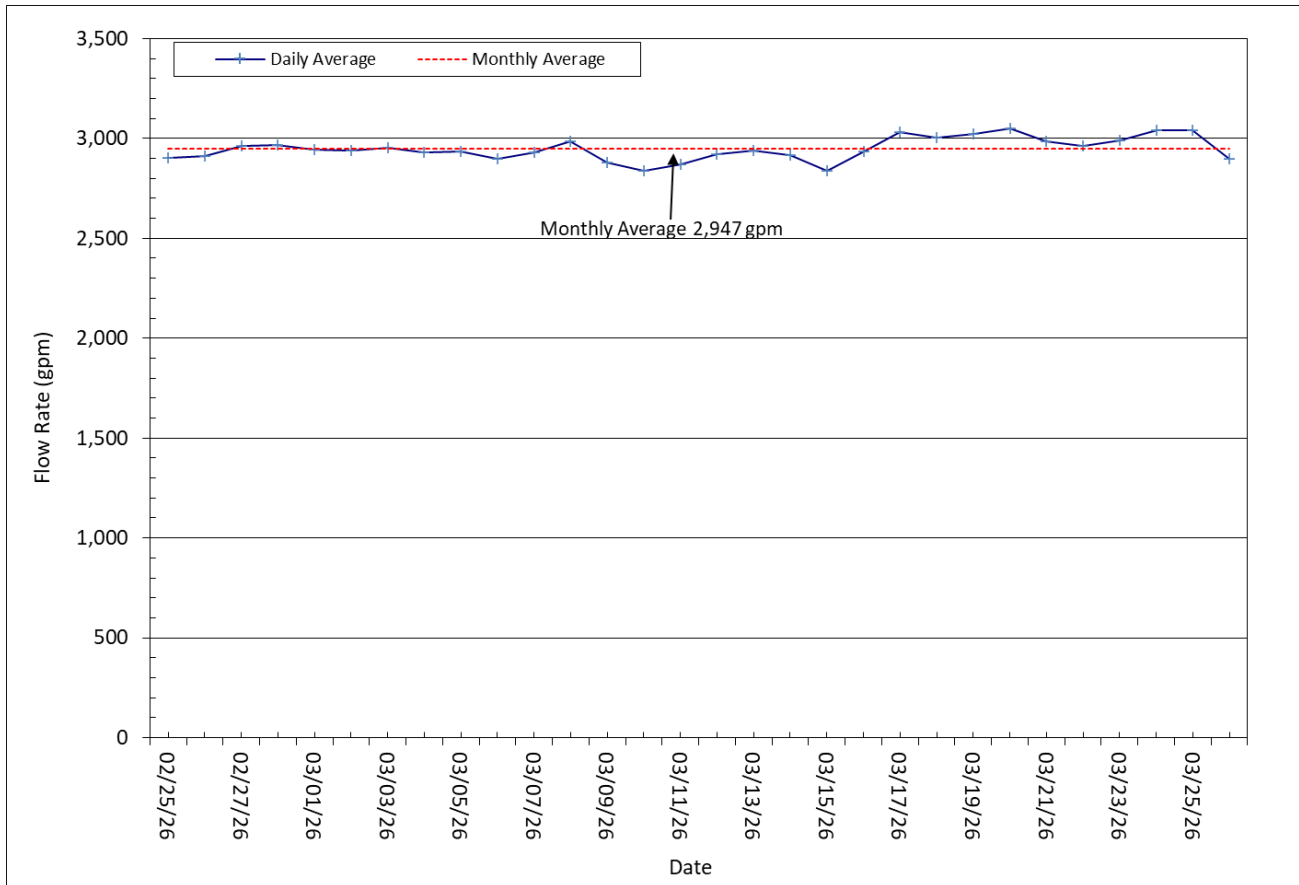


Figure 1. Horseshoe Bend/Capture System flow data.

Attachment 1 contains a summary of monthly flow statistics for the HsB/CS and attachment 2 is the

long-term flow hydrograph for this area.

**East Camp Alluvial System Monitoring**

The East Camp alluvial groundwater monitoring system consists of the LP- and MR97-series wells located within the active mine area, and AMC, GS, AMW, and BMF05-series wells. All of the wells associated with the four latter groups are located outside and to the south of the active mine area, with the exception of wells AMC-5 and AMC-15, which are within the active mine area. Well AMC-10 has been dry since its installation; the water level in LP-7 was unchanged. Well LP-15 was not measured due to winterization of the well pump and discharge pipe. Table 1 summarizes the water-level changes for the alluvial wells and presents the maximum water-level increase and decrease within each group. Water levels in basin alluvial wells (wells outside the active mine area) decreased in a majority of sites this month.

Well Series (No. Wells)	No. Wells Water Level Increased	No. Wells Water Level Decreased	Max. Water-Level Increase	Max. Water-Level Decrease
LP (14)	0	12	-	-0.72
MR97 (3)	3	0	0.23	-
AMC (7)	2	4	0.05	-0.37
GS (4)	0	4	-	-0.20
AMW (3)	1	2	0.28	-0.24
BMF05 (4)	0	4	-	-0.32

Table 1. East Camp Alluvial Well Water-Level Changes.

Hydrographs for wells LP-1-LP-2-LP-4, LP-9-LP-10, and LP-14-LP-15-LP-16, showing the long-term trends are included. These wells are reflective of the general alluvial system within the active mine area and show greater variability, the result of historic and current mine operations and seasonal trends.

Twenty-four alluvial wells within the East Camp System are equipped with pressure transducers to record water-level changes every hour. These detailed records provide information on the daily and seasonal changes that occur within the regional groundwater system. Copies of the monthly and long-term hydrographs for each of these sites are attached.

Figure 2 shows daily average water level elevations for wells LP-14, AMC-8, and BMF05-3. Well LP-14 is located on the southern edge of the mine property, well AMC-8 is just south of LP-14 outside the mine area, and well BMF05-3 is farther south in the basin. Wells LP-14 and AMC-8 have shown periodic influences from mining activities while well BMF05-3 is outside the area of influence of current or historic mining activity and has a more seasonal trend. A decreasing water-level trend (long-term) is noticeable in wells LP-14 and AMC-8 from 2012 thru mid-2023; water-level responses in both wells are similar. Above average summer 2023 precipitation resulted in increasing water-levels during the summer and fall in all three wells. Water levels in AMC-8 appear to be returning to normal following short-term decline following pumping for sampling, while the water-level in LP-14 continues to decline. The water-level in BMF05-3 continues to follow a seasonal trend. The influence of irrigation wells near BMF05-3 during the summer and fall months are apparent on well-transducer hydrographs.

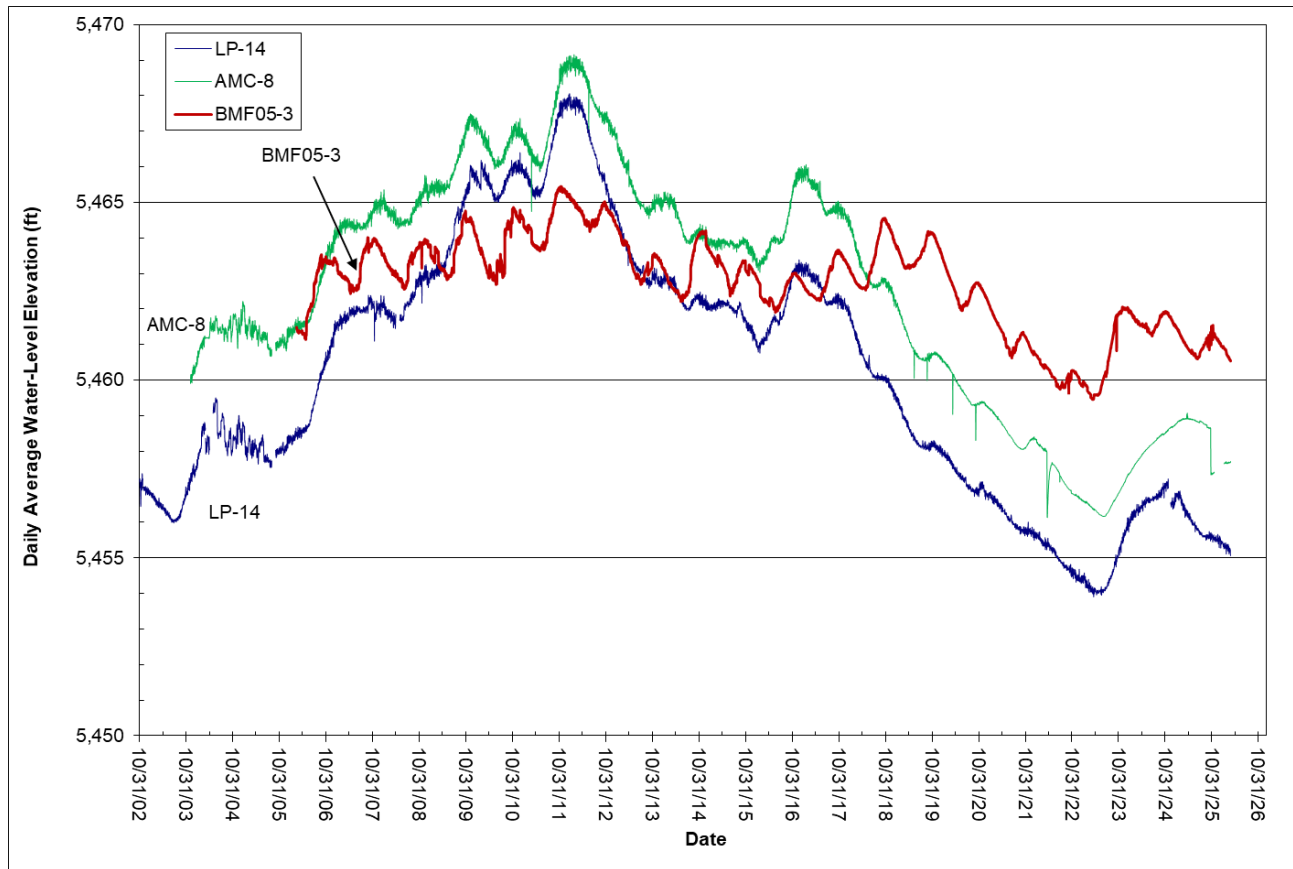


Figure 2. Hydrograph showing water-level elevations for alluvial wells LP-14, AMC-8, and BMF05-3.

The GS-series wells are two pairs of nested wells, a shallow and a deep well, within the alluvial aquifer. Figure 3 is a hydrograph showing the water levels for wells GS-44S and GS-44D. The water-level changes shown on this graph are similar to those for the GS-46S and GS-46D nested wells; water levels increase from snowmelt in late spring and precipitation during the summer followed by water-level declines in the fall and winter. Water-levels trended down from 2019 through mid-2023, possibly due to below normal annual precipitation. Water-levels continue their seasonal decline.

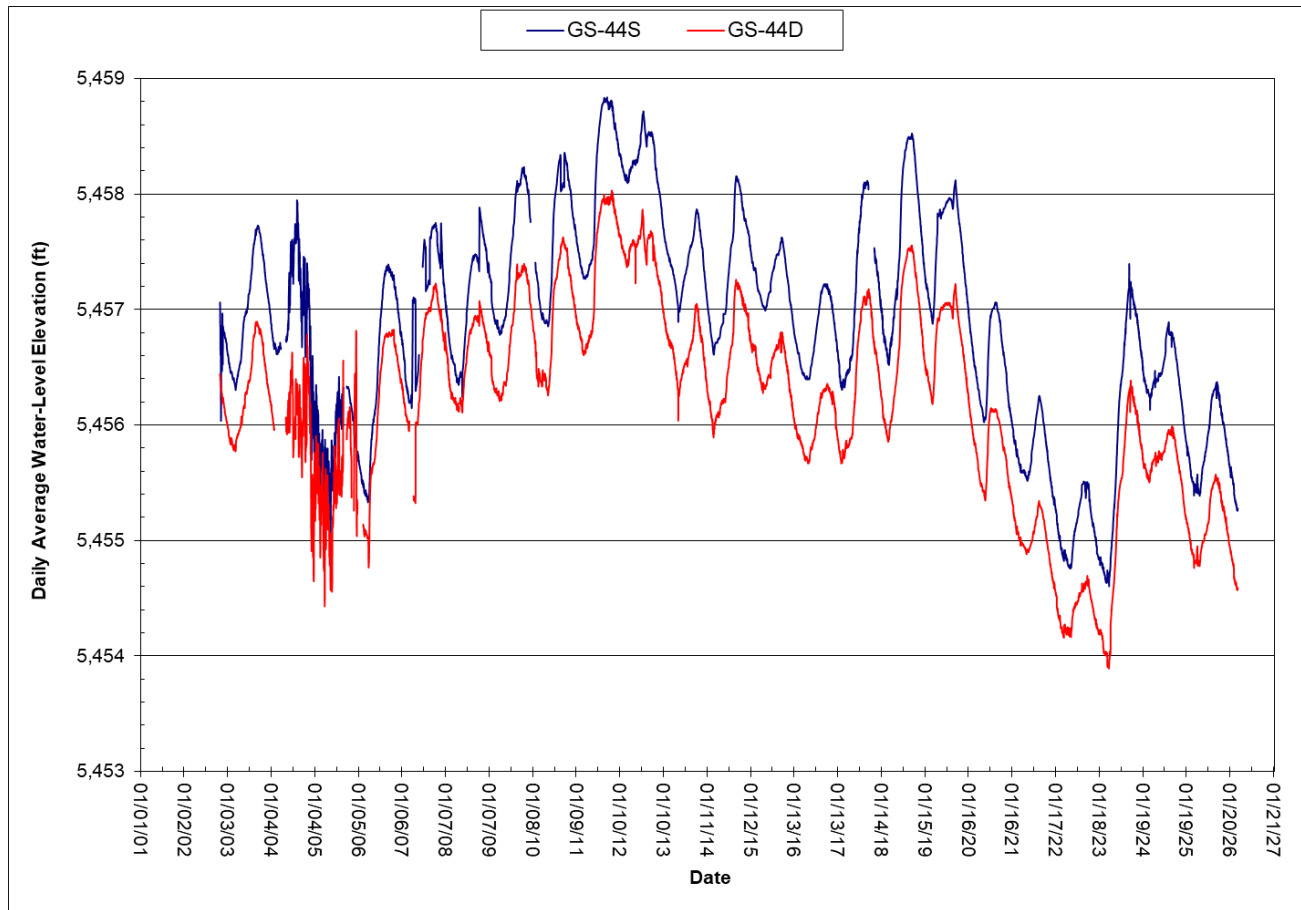


Figure 3. Hydrograph showing water-level elevations for alluvial wells GS-44S and GS-44D.

### **East Camp Mine and Bedrock System**

The East Camp bedrock system consists of six underground mines, 10 bedrock wells within the active mine area, and three bedrock wells outside the active-mine area. The latter three wells are located at Hebgen, Parrot, and Belmont parks. The Berkeley Pit is part of the East Camp bedrock monitoring system.

The 1994 Record of Decision (ROD) and 2002 CD established the maximum level that water in the East Camp bedrock system is allowed to rise, and is based upon fourteen compliance points within that system. Under the conditions contained in the CD, the water level in the bedrock system cannot exceed the Protective Water Level (PWL) of 5,410 ft elevation at any of the compliance points, ensuring that the water level in the Berkeley Pit remains the lowest point within the East Camp bedrock system. Table 2 contains recent monthly water levels for the 14 compliance points and the Berkeley Pit, and the depth below the PWL. The water level is highest in the Pilot Butte Mine, with the water level 29.18 ft below the PWL. Well Lex #1 was added to the monitoring network following its drilling and completion (grouting). Pressure transducer and direct read cable were installed for continuous water level monitoring. This site replaces the Lexington Mine monitoring site. The current water level is reflective of the other East Camp bedrock monitoring sites.

Compliance Point	Monthly Water Level (ft)	Depth Below PWL (ft)
Anselmo Mine	5,376.44	33.56
Granite Mountain (Well GM-1)	5,371.04	38.96
Pilot Butte Mine	5,380.82	29.18
Kelley Mine	5,370.18	39.82
Lexington Mine (Lex #1)	5378.42	31.58
Steward Mine	5,373.11	36.89
Belmont Well #2	5,368.21	41.79
Well A	5,368.37	41.63
Well C	5,363.30	46.70
Well D-1	5,366.10	43.90
Well D-2	5,365.55	44.45
Well G	5,371.83	38.17
Well J	5,359.78	50.22
Berkeley Pit	5,355.83	54.17
Continental Pit	Not Monitored During Active Mining	

Table 2. Compliance Points Monthly Water-Level Elevation and Depth below Protective Water Level (PWL).

Table 3 summarizes the water-level changes for the past month within the East Camp bedrock system, along with the maximum changes within each group of monitoring sites. Monthly water level changes were greater than previous months due to the temporary suspension of pumping from the Berkeley Pit. (MR and AR announced a temporary suspension of pumping while the pump station and discharge line are moved to a new location.) The influence of the Pilot Project and its temporary suspension on bedrock system water-levels are shown in Figure 4 that compares water-level elevations for the Berkeley Pit and selected East Camp mines and bedrock well G since 2017; the PWL is shown for comparison purposes.

Monitoring Sites (No. Mines/Wells)	No. Sites Water Level Increased	No. Sites Water Level Decreased	Max. Water-Level Increase	Max. Water-Level Decrease
Mine Shafts (6) (includes Wells GM-1 and Lex #1)	6	0	1.65	–
Bedrock Wells within Active Mine Area (10)**	7	3	0.80	-0.40
Bedrock Wells outside Active Mine Area (3)	1	2	0.03	-5.00

\*\*Includes Belmont Well #2.

Table 3. East Camp Bedrock Water-Level Changes.

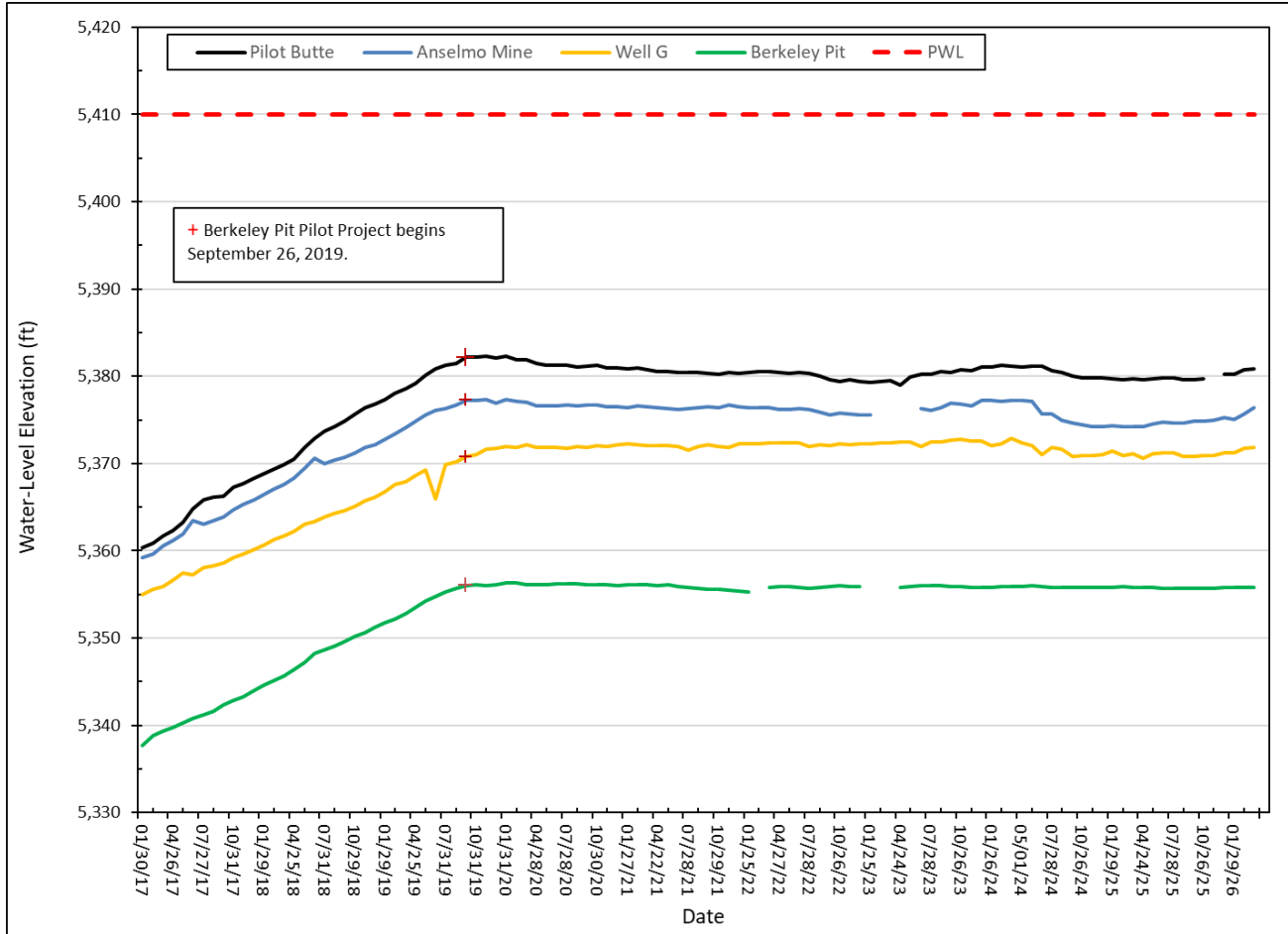


Figure 4. Hydrograph showing influence of Berkeley Pit pumping project on water-level elevations in selected East Camp bedrock sites.

Within the East Camp bedrock system, 11 wells and 6 mine shafts (includes Granite Mountain Mine and Lexington Mine replacement wells – GM-1 and Lex #1) are equipped with pressure transducers that record hourly water-level changes. Copies of the monthly and long-term hydrographs for each site are attached at the end of the report. Figure 5 is a hydrograph showing a comparison of daily average water-level elevations for wells A, C, and G. Direct read cables and transducers were replaced in the Steward Mine and bedrock well B.

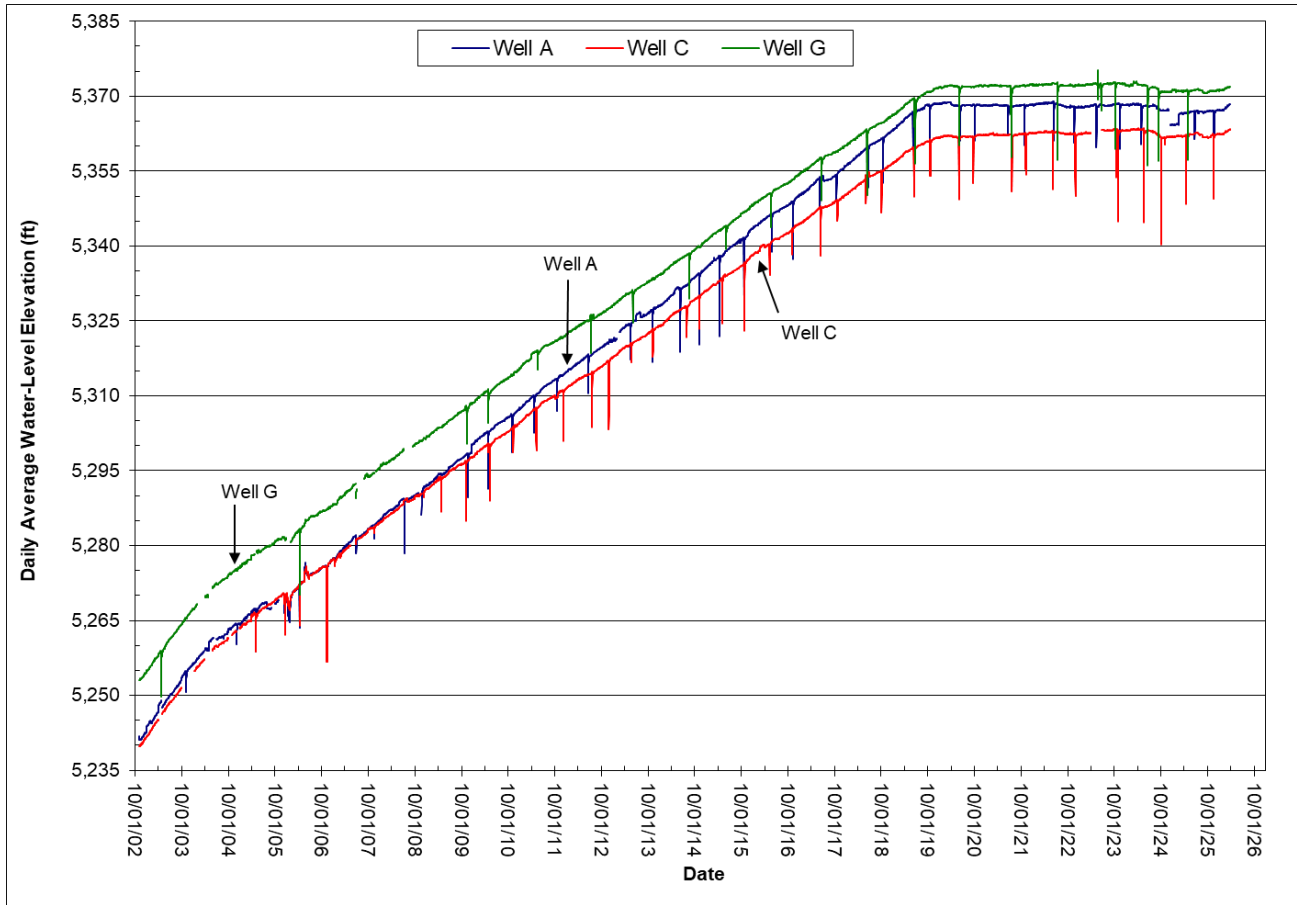


Figure 5. Hydrograph showing water-level elevations for bedrock wells A, C, and G.

**West Camp System**

The West Camp monitoring system consists of three underground mines: Emma, Ophir, Travona, and six monitoring wells. Table 4 summarizes the water-level changes for the past month within the West Camp bedrock system, along with the maximum changes within each group of monitoring sites.

Monitoring Sites (No. Mines/Wells)	No. Sites Water Level Increased	No. Sites Water Level Decreased	Max. Water-Level Increase	Max. Water-Level Decrease
Mine Shafts (3)	0	3	–	-0.06
Bedrock Wells (6)	2	4	0.21	-2.08

Table 4. West Camp Bedrock Water-Level Changes.

The ROD and CD established a PWL for the West Camp bedrock system of 5,435 ft, as measured at well BMF96-1D; the current water level is more than 15 ft. below the West Camp’s compliance point. Water levels in

the West Camp underground mine system are controlled by pumping groundwater from well WCP-1, which is completed in the Travona Mine 800-level workings (approx. 500 ft below ground surface). More than 22.2 acre-ft of water was pumped this past month, with pumping rates varying between 170 and 190 gpm. Periodic Butte Priority Soils related operational/maintenance activities influenced pumping rates throughout the month. Monthly transducer hydrographs show water-level variations due to changes in pumping rates.

Six monitoring wells and two mines in the West Camp are equipped with pressure transducers that record water-level changes every hour. Two of the wells (BMF96-1D and BMF96-1S) are located adjacent to the WCP-1, with well BMF96-1D completed in the same mine workings as WCP-1; well BMF96-1S is completed in the shallow, weathered bedrock. Figure 6 is a hydrograph showing daily average water levels for the two mines and well BMF96-1D through March 2026. The water-level variations seen in these sites are primarily the result of pumping rate changes related to Butte Priority Soils activities.

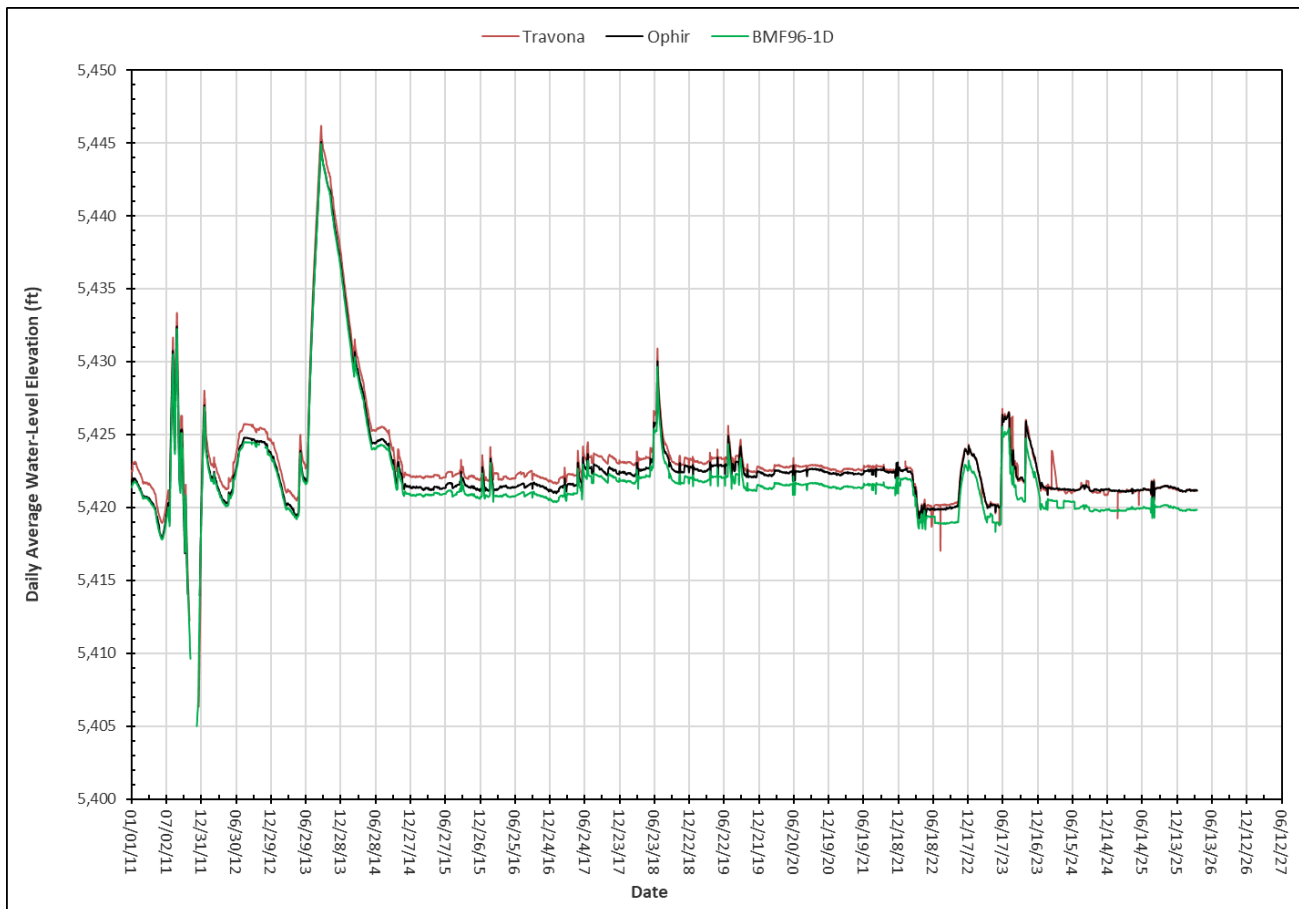


Figure 6. Water-level comparisons for the West Camp underground system.

**Outer Camp System**

The Outer Camp monitoring system consists of two underground mines and a bedrock well near each mine. Water levels decreased in all four sites during March 2026. The Outer Camp has no PWL or compliance monitoring points. Water levels in this area are considered to be at or near pre-mining levels. Continuous water

levels are monitored in the Orphan Boy and Marget Ann mines and Tech well by pressure transducers.

In addition to the four groundwater-monitoring sites, a seep (spring), referred to as the Green Seep, is monitored for the quantity of water flowing from it. Figure 7 shows the flow rate for March 2026; the flow rate at the end of the month was 37 gpm.

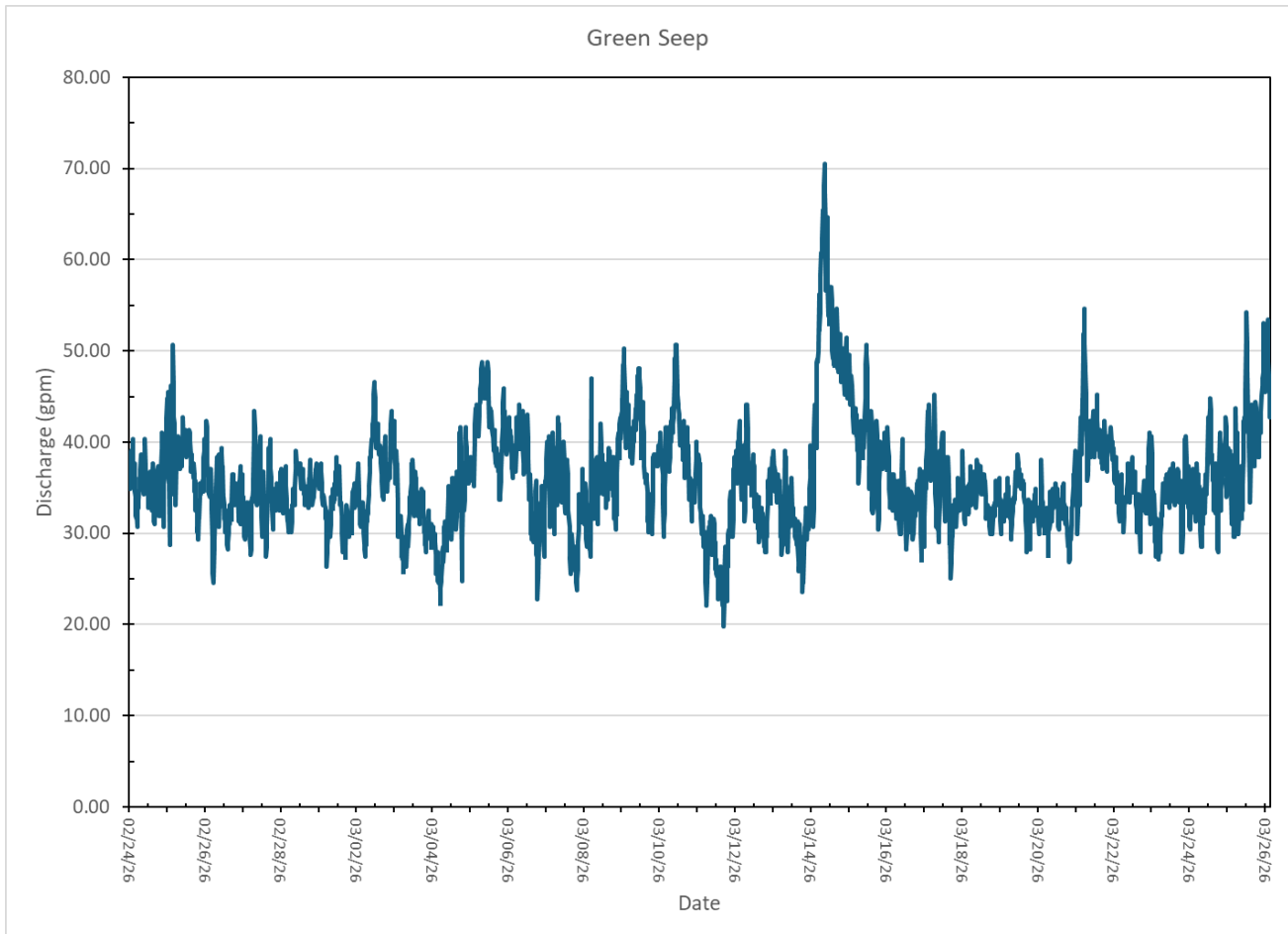
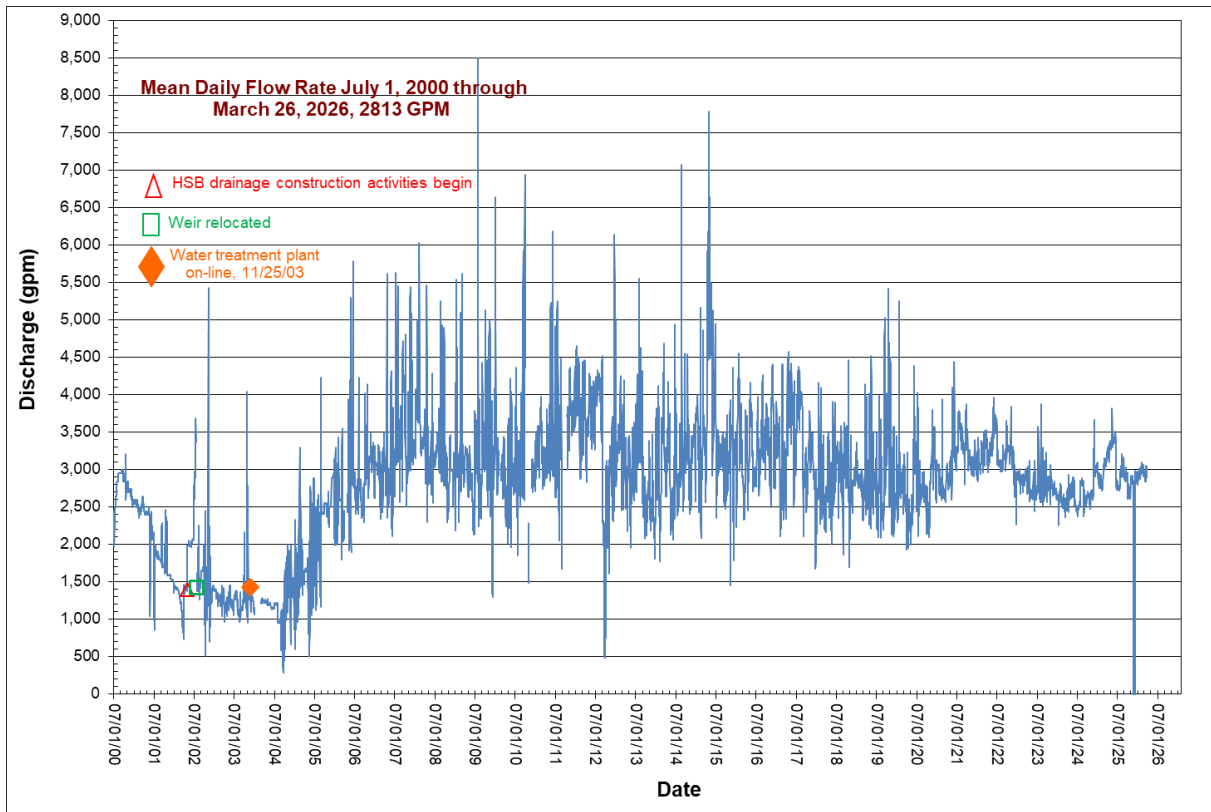


Figure 7. Green Seep flow rate, March 2026.

### **Water-Quality Sampling**

The monthly water sample was collected from the HsB/CS. Copies of results through February (sample collected 2/25/26) are attached at the end of the report.





Attachment 2. Long-term flow hydrograph for the Horseshoe Bend/Capture System Area.

**Montana Bureau of Mines and Geology  
Horseshoe Bend Drainage  
Water Quality Data**

04/09/26  
Horseshoe Bend Drainage  
M#:125744

Collector/ Lab Analysis	Date (mm/dd/yy)	Time (HRS)	PHYSICAL PARAMETERS					DISSOLVED CONCENTRATION										DISSOLVED CONCENTRATION							
			Discharge (gpm)	FIELD pH	SC (uMHOS)	Temp (C)	Eh (MV)	LAB pH	SC (uMHOS)	Hardness (mg/l)	Alkalinity (mg/l)	Ca (mg/l)	Mg (mg/l)	Na (mg/l)	K (mg/l)	Fe (mg/l)	Mn (mg/l)	SiO <sub>2</sub> (mg/l)	HCO <sub>3</sub> (mg/l)	CO <sub>3</sub> (mg/l)	Cl (mg/l)	SO <sub>4</sub> (mg/l)	NO <sub>2</sub> -N (mg/l)	NO <sub>3</sub> -N (mg/l)	F (mg/l)
MBMG	07/27/23	9:05	2,730	3.19	4,470	14.2	677	2.90	4,420	2,012	0.0	465	207	89	13.3	117	75	66.1	0.0	0.0	16.3	3,379	0.25	0.37	12.30
MBMG	09/06/23	12:08	2,730	3.60	4,320	13.0	682	2.83	4,385	1,943	0.0	456	195	88	14.2	109	72	62.6	0.0	0.0	16.7	3,385	0.22	0.28	11.27
MBMG	09/25/23	10:35	2,965	3.09	4,490	11.8	682	2.76	4,650	2,126	0.0	478	227	86	14.9	125	83	66.1	0.0	0.0	16.6	3,550	<0.05	0.25	11.96
MBMG	10/17/23	9:10	2,885	4.04	4,425	12.5	639	2.62	4,740	1,993	0.0	438	218	84	13.2	151	80	66.3	0.0	0.0	16.9	3,731	0.12	5.46	14.10
MBMG	11/29/23	8:24	2,730	3.02	4,335	4.3	650	2.94	4,530	1,986	0.0	433	198	86	13.1	130	75	68.8	0.0	0.0	17.2	3,520	<0.05	<0.05	12.96
MBMG	01/02/24	10:30	2,650	2.40	4,325	3.3	667	2.68	4,540	1,965	0.0	449	205	89	13.8	128	80	68.6	0.0	0.0	17.8	3,515	<0.05	<0.05	13.20
MBMG	01/31/24	8:30	2,650	2.61	4,335	5.9	660	2.76	4,570	1,951	0.0	445	204	84	13.9	123	83	69.3	0.0	0.0	17.2	3,441	<0.05	0.26	11.66
MBMG	02/28/24	8:40	2,575	3.15	4,645	4.1	638	2.93	4,660	2,026	0.0	461	212	86	14.3	131	82	66.0	0.0	0.0	17.4	3,502	<0.05	0.40	12.40
MBMG	03/29/24	9:00	2,650	2.92	4,375	7.0	635	2.97	4,765	2,091	0.0	469	224	89	13.2	121	84	65.7	0.0	0.0	17.7	3,619	<0.05	0.34	12.64
MBMG	05/01/24	7:45	2,650	2.33	4,505	7.6	669	2.50	4,805	2,070	0.0	460	224	94	14.0	120	83	64.6	0.0	0.0	18.2	3,577	<0.05	0.31	13.52
MBMG	06/04/24	10:48	2,575	2.96	4,600	9.6	662	2.78	4,815	1,996	0.0	447	214	85	12.5	119	85	65.4	0.0	0.0	18.5	3,503	<0.05	0.28	12.98
MBMG	06/26/24	8:20	2,575	2.63	4,595	12.8	691	2.77	4,957	2,101	0.0	475	222	90	13.0	95	83	62.7	0.0	0.0	18.6	3,536	<0.05	0.33	12.62
MBMG	07/29/24	10:12	2,575	2.74	4,580	12.8	641	2.77	4,480	1,992	0.0	452	210	83	16.2	99	86	64.7	0.0	0.0	18.3	3,412	<0.05	0.28	11.78
MBMG	08/28/24	8:57	2,350	3.08	4,735	11.6	685	3.18	4,650	2,125	0.0	481	224	90	13.2	70	89	66.5	0.0	0.0	19.0	3,470	<0.05	0.36	12.03
MBMG	10/01/24	8:57	2,500					3.16	4,640	1,975	0.0	442	212	90	15.0	114	91	73.5	0.0	0.0	18.4	3,737	<0.05	0.20	13.35
MBMG	10/31/24	9:45	2,500	3.67	4,550	8.0	654	3.22	4,670	1,979	0.0	442	213	88	14.6	114	92	74.8	0.0	0.0	19.0	3,455	<0.05	0.28	12.99
MBMG	11/26/24	9:45	3,205	3.94	4,355	7.9	636	3.16	4,710	2,035	0.0	453	220	84	13.5	116	86	70.9	0.0	0.0	19.3	3,520	<0.005	0.27	13.15
MBMG	12/30/24	12:11	3,045	3.24	4,470	8.0	684	3.15	4,800	2,056	0.0	450	226	87	11.9	123	87	71.3	0.0	0.0	20.3	3,700	0.24	0.25	11.88
MBMG	01/30/25	13:30	3,045	2.46	4,600	9.7	665	3.23	4,805	2,043	0.0	441	229	91	13.6	117	84	68.4	0.0	0.0	19.6	3,553	<0.05	<0.05	13.66
MBMG	02/28/25	10:30	3,205	2.59	4,685	9.3	654	3.18	4,780	2,079	0.0	443	237	89	13.0	125	88	73.2	0.0	0.0	20.8	3,824	<0.05	0.27	13.02
MBMG	03/26/25	9:40	3,452	2.85	4,645	9.2	643	3.08	4,835	2,167	0.0	461	247	94	13.2	140	92	69.9	0.0	0.0	28.0	3,874	<0.05	0.34	12.62
MBMG	04/24/25	15:30	3,370	3.14	4,575	11.9	490	3.15	4,825	2,035	0.0	429	234	91	12.1	139	86	63.9	0.0	0.0	21.4	3,790	<0.05	0.29	11.95
MBMG	05/29/25	11:00	3,535	2.63	4,550	13.5	644	3.11	4,880	2,012	0.0	431	227	84	13.0	122	86	65.0	0.0	0.0	22.5	3,715	0.26	0.33	11.83
MBMG	06/30/25	11:38	2,730	3.69	4,700	11.4	656	3.27	4,845	2,084	0.0	444	237	88	11.9	124	81	61.2	0.0	0.0	23.8	3,865	0.28	0.32	14.70
MBMG	07/29/25	10:10	3,045		4,635	12.6	628	3.18	4,905	2,012	0.0	433	226	83	13.1	121	85	65.9	0.0	0.0	23.0	3,666	<0.05	0.35	13.14
MBMG	08/26/25	11:40	2,965	4.28	4,605	13.2	568	3.28	5,000	2,015	0.0	431	228	85	12.9	127	91	66.7	0.0	0.0	24.0	3,854	0.217	0.23	12.06
MBMG	10/01/25	10:45	2,885	3.33	4,745	11.5	619	3.29	4,735	2,047	0.0	437	232	87	13.9	133	88	64.8	0.0	0.0	24.3	3,775	0.259	0.27	13.20
MBMG	10/28/25	13:02	2,810	2.85	4,575	10.8	650	3.20	4,765	2,042	0.0	433	234	85	12.8	130	90	64.3	0.0	0.0	25.2	3,890	0.222	0.23	12.85
MBMG	12/03/25	13:10	2,885	3.13		10.5	637	3.35	4,875	2,075	0.0	433	241	87	12.7	128	91	63.2	0.0	0.0	25.8	3,832	0.263	0.31	13.36
MBMG	12/29/25	11:45	2,885	2.83	4,910	9.1	520	3.32	4,970	2,127	0.0	436	252	91	13.0	125	92	64.6	0.0	0.0	27.4	3,978	<0.05	<0.05	13.38
MBMG	12/29/25	11:45	2,885	2.83	4,910	9.1	520	3.23	4,980	2,117	0.0	435	250	92	13.1	125	92	64.0	0.0	0.0	27.9	4,056	<0.05	<0.05	13.42
MBMG	01/28/26	10:25	3,045	2.86	4,690	8.9	646	3.24	4,970	2,162	0.0	439	259	89	13.2	129	94	63.6	0.0	0.0	28.8	4,050	0.271	0.34	14.81
MBMG	02/25/26	10:34	3,045	2.92	4,890	9.5	639	3.10	4,015	2,133	0.0	434	255	88	12.1	127	94	65.1	0.0	0.0	29.3	3,986	0.271	0.29	14.74
Mean Value			2,876	3.23	5,166	11.1	571	3.01	5,602	2,397	0	441	315	79	9.8	271	115	76	0.0	0.0	16.08	5,136	0.9	0.3	16.49
Maximum Value			6,350	5.65	9,010	22.9	821	3.96	11,540	3,763	15	555	655	100	16.4	937	361	102	0.0	0.0	33.60	13,453	9.8	5.5	48.61
Minimum Value			820	1.52	1,523	2.2	286	2.14	3,920	1,777	0	384	106	61	1.5	70	72	56	0.0	0.0	8.69	3,010	0.1	0.1	1.24
Number Readings			320	315	319	319	313	319	318	324	322	325	325	325	324	325	325	317	317	317	253	317	40	94	310

nd/na - not measured or analyzed

**Montana Bureau of Mines and Geology  
Horseshoe Bend Drainage  
Water Quality Data**

04/09/26  
Horseshoe Bend Drainage  
M#:125744

DISSOLVED CONCENTRATION

Collector/ Lab Analysis	Date (mm/dd/yy)	Al (ug/l)	Ag (ug/l)	As (ug/l)	B (ug/l)	Be (ug/l)	Cd (ug/l)	Cr (ug/l)	Co (ug/l)	Cu (ug/l)	Hg (ug/L)	Li (ug/l)	Mo (ug/l)	Ni (ug/l)	Pb (ug/l)	Se (ug/l)	Sr (ug/l)	Ti (ug/l)	Tl (ug/l)	U (ug/l)	V (ug/l)	Zn (ug/l)	Zr (ug/l)
MBMG	07/27/23	109,004	<1.0	4.5	40.0	15.4	757	7.0	528	45,879	0.006	71.3	<1.0	353	16.0	8.07	1,446	94.6	<1.0	191	<1.0	139,478	<1.0
MBMG	09/06/23	112,853	<1.0	5.9	22.1	14.2	633	14.6	506	49,527	<0.005	87.1	2.96	339	7.8	5.78	1,258	61.8	<1.0	174	<1.0	132,956	<1.0
MBMG	09/25/23	128,761	<1.0	11.0	23.3	15.5	723	<1.0	595	51,469	<0.005	67.6	3.84	388	8.3	13.41	1,481	69.3	<1.0	202	<1.0	155,993	<1.0
MBMG	10/17/23	147,931	2.97	14.1	<5.0	14.9	639	4.4	594	49,180	<0.005	64.0	2.33	380	8.2	9.15	1,269	53.2	<1.0	201	<1.0	148,625	<1.0
MBMG	11/29/23	120,284	<1.0	9.8	10.3	14.4	689	11.1	543	47,531	<0.005	65.1	2.72	375	8.8	9.51	1,314	68.8	<1.0	177	<1.0	137,470	1.25
MBMG	01/02/24	125,338	<1.0	7.9	100.3	13.9	681	5.7	549	52,217	<0.005	64.7	3.47	386	4.7	7.86	1,201	69.7	<1.0	169	<1.0	148,521	2.22
MBMG	01/31/24	130,121	2.27	9.0	66.7	14.0	703	10.1	566	52,273	<0.005	64.5	4.19	355	9.5	10.07	1,296	75.8	<1.0	163	<1.0	152,991	2.59
MBMG	02/28/24	130,242	<1.0	15.6	<5.0	7.3	711	10.9	509	55,661	0.007	62.7	<1.0	326	28.7	8.42	1,330	116.6	<1.0	176	4.36	151,180	<1.0
MBMG	03/29/24	137,984	<1.0	7.5	112.6	16.6	766	4.7	583	69,743	<0.005	78.7	2.02	392	81.4	7.96	1,280	92.9	<1.0	205	<1.0	154,553	<1.0
MBMG	05/01/24	130,660	<1.0	9.0	92.0	15.9	731	5.2	592	59,923	0.006	80.0	2.45	391	50.3	8.03	1,235	95.5	<1.0	195	<1.0	156,102	2.72
MBMG	06/04/24	125,649	<1.0	6.9	43.7	16.1	737	6.6	551	59,421	<0.005	74.1	2.66	408	41.2	11.25	1,283	83.6	<1.0	198	<1.0	160,693	<1.0
MBMG	06/26/24	116,888	<1.0	<1.0	50.8	16.9	732	3.1	582	56,305	<0.005	79.1	<1.0	390	21.1	6.95	1,354	69.9	<1.0	200	<1.0	153,016	<1.0
MBMG	07/29/24	119,828	<1.0	<1.0	26.5	14.8	780	3.4	544	58,591	<0.005	58.5	<1.0	394	33.5	8.55	1,385	83.2	<1.0	197	<1.0	156,189	<1.0
MBMG	08/28/24	116,121	2.27	<1.0	38.8	15.5	915	3.4	590	67,394	<0.005	80.7	<1.0	398	35.3	6.53	1,599	95.6	<1.0	194	<1.0	156,253	<1.0
MBMG	10/01/24	128,448	<1.0	10.4	131.1	14.2	899	<1.0	798	53,554	<0.005	25.5	2.39	562	13.6	<1.0	2,143	35.6	<1.0	177	<1.0	166,304	2.33
MBMG	10/31/24	131,005	<1.0	11.6	123.5	14.9	896	<1.0	794	55,093	<0.005	29.6	2.37	558	23.0	<1.0	2,059	87.1	<1.0	184	<1.0	168,704	<1.0
MBMG	11/26/24	136,272	<1.0	3.0	<5.0	15.8	779	<1.0	574	60,225	<0.005	89.3	3.41	382	22.4	6.79	1,249	78.9	<1.0	191	<1.0	163,632	2.31
MBMG	12/30/24	145,287	<1.0	5.3	<5.0	17.4	802	4.4	605	63,960	<0.005	94.0	4.67	399	19.1	8.22	1,268	72.5	<1.0	202	<1.0	172,038	2.44
MBMG	01/30/25	133,511	40.67	3.5	203.6	19.3	781	7.6	604	56,608	<0.005	81.0	4.13	413	19.9	7.22	1,206	84.4	<1.0	198	<1.0	163,858	<1.0
MBMG	02/28/25	144,856	20.70	4.7	221.9	20.0	799	8.1	634	61,243	<0.005	81.8	4.41	431	18.3	8.13	1,226	79.7	<1.0	214	<1.0	170,364	<1.0
MBMG	03/26/25	153,461	<1.0	<1.0	<5.0	17.6	793	<1.0	613	69,020	<0.005	28.6	4.65	426	16.3	5.46	1,199	95.9	<1.0	195	<1.0	180,706	<1.0
MBMG	04/24/25	145,811	<1.0	3.2	<5.0	19.6	808	2.9	600	62,834	<0.005	37.2	2.02	413	15.0	5.29	1,158	87.0	<1.0	211	<1.0	168,825	<1.0
MBMG	05/29/25	142,455	<1.0	<1.0	<5.0	17.4	743	8.8	564	60,997	<0.005	78.8	3.47	391	13.9	5.39	1,173	88.6	<1.0	192	12.64	164,946	<1.0
MBMG	06/30/25	138,049	<1.0	<1.0	19.2	15.9	714	<1.0	589	58,919	<0.005	75.2	2.80	382	13.1	9.34	1,172	97.1	<1.0	203	<1.0	158,498	<1.0
MBMG	07/29/25	141,676	<1.0	3.2	27.3	17.3	824	3.4	631	61,378	<0.005	100.0	3.78	418	17.8	10.71	1,246	69.5	<1.0	208	<1.0	167,677	<1.0
MBMG	08/26/25	146,654	2.78	3.6	29.1	17.8	807	6.1	625	63,047	<0.005	89.6	3.53	427	15.7	11.92	1,236	79.4	<1.0	216	<1.0	177,089	<1.0
MBMG	10/01/25	147,904	5.77	3.3	25.2	18.3	843	7.8	656	63,380	<0.005	93.2	2.342	428	14.8	8.99	1,255	90.3	<1.0	218	<1.0	171,568	<1.0
MBMG	10/28/25	150,753	<1.0	3.7	33.2	19.6	849	2.4	728	65,765	<0.005	103.4	<1.0	429	<0.6	10.12	1,236	70.4	<1.0	248	<1.0	173,412	<1.0
MBMG	12/03/25	155,955	<1.0	6.2	67.8	20.9	885	77.9	731	67,783	<0.005	96.6	2.14	443	<0.6	11.17	1,248	185.9	<1.0	253	<1.0	180,068	<1.0
MBMG	12/29/25	169,297	18.12	2.3	27.3	22.6	934	14.1	665	71,262	<0.005	130.1	3.729	442	18.7	13.18	1,351	61.9	<1.0	246	8.74	183,878	<1.0
MBMG	12/29/25	167,015	17.67	4.4	24.7	22.9	929	13.6	663	70,506	<0.005	126.2	3.167	454	18.9	12.30	1,239	56.8	<1.0	274	8.34	181,673	<1.0
MBMG	01/28/26	169,343	15.69	5.0	23.7	22.2	954	13.8	676	71,171	0.006	62.9	2.96	461	<0.6	6.24	1,447	59.3	<1.0	244	8.85	184,783	<1.0
MBMG	02/25/26	164,578	121.49	5.1	10.0	20.2	920	13.8	661	71,724	<0.005	127.0	4.27	458	19.5	13.26	1,226	63.0	<1.0	252	<1.0	187,250	<1.0

Mean Value	208,099	11	10.4	106	24.6	1,094	32.5	787	40,756	0.008	123	5	557	7.8	14	1,037	64.3	3.15	298	14.1	238,258	5
Maximum Value	657,448	121	66.5	513	52.9	2,151	224.6	1,429	101,000	0.031	703	33	1,165	81.4	148	2,143	186	13.20	664	139.2	434,103	23
Minimum Value	92,344	1	0.9	1	7.3	595	2.4	340	10,485	0.001	7	1	148	0.6	2	587	1.3	0.23	105	0.8	131,866	1.0
Number Readings	321	41	234	210	297	327	256	327	327	12	321	98	325	169	246	322	211	10	307	126	327	62

nd/na - not measured or analyzed

Montana Bureau of Mines and Geology  
 East Camp Alluvial Water-Level Elevations  
 Site Name/Monthly Elevations

DATE MO/YR  (MP Elev.)	LP-01	ELEV.	MO. DIFF	LP-02	ELEV.	MO. DIFF	LP-03	ELEV.	MO. DIFF	LP-04	ELEV.	MO. DIFF	LP-05	ELEV.	MO. DIFF	LP-06	ELEV.	MO. DIFF	
	SWL (FT)	(FT)	(FT)	SWL (FT)	(FT)	(FT)	SWL (FT)	(FT)	(FT)	SWL (FT)	(FT)	(FT)	SWL (FT)	(FT)	(FT)	SWL (FT)	(FT)	(FT)	
	TD-200'	SI-177-197'		TD-162'	SI-129.5-159.5'		TD-55.20'	SI-32-52'	5566.00		TD-150'	SI-128-148'		TD-231'	SI-189-229'		TD-115'	SI-92.2-112.2'	5713.18
		5619.70			5624.70									5585.50		5583.90			
Jan-24	157.51	5462.19	-0.20	154.28	5470.42	-0.09	P&A			114.04	5471.46	0.20	143.97	5439.93	-0.12	P&A			
Feb-24	157.69	5462.01	-0.18	153.99	5470.71	0.29	P&A			114.04	5471.46	0.00	144.83	5439.07	-0.86	P&A			
Mar-24	157.77	5461.93	-0.08	154.13	5470.57	-0.14	P&A			113.91	5471.59	0.13	144.08	5439.82	0.75	P&A			
Apr-24	158.20	5461.50	-0.43	154.33	5470.37	-0.20	P&A			114.12	5471.38	-0.21	144.40	5439.50	-0.32	P&A			
May-24	158.61	5461.09	-0.41	154.84	5469.86	-0.51	P&A			114.36	5471.14	-0.24	144.78	5439.12	-0.38	P&A			
Jun-24	158.66	5461.04	-0.05	154.85	5469.85	-0.01	P&A			114.40	5471.10	-0.04	144.85	5439.05	-0.07	P&A			
Jul-24	158.72	5460.98	-0.06	154.39	5470.31	0.46	P&A			114.42	5471.08	-0.02	144.88	5439.02	-0.03	P&A			
Aug-24	158.98	5460.72	-0.26	154.82	5469.88	-0.43	P&A			114.58	5470.92	-0.16	145.11	5438.79	-0.23	P&A			
Sep-24	159.40	5460.30	-0.42	155.04	5469.66	-0.22	P&A			114.87	5470.63	-0.29	145.47	5438.43	-0.36	P&A			
Oct-24	159.33	5460.37	0.07	154.73	5469.97	0.31	P&A			114.73	5470.77	0.14	145.44	5438.46	0.03	P&A			
Nov-24	159.64	5460.06	-0.31	155.26	5469.44	-0.53	P&A			114.88	5470.62	-0.15	145.65	5438.25	-0.21	P&A			
Dec-24	159.41	5460.29	0.23	155.00	5469.70	0.26	P&A			114.55	5470.95	0.33	145.49	5438.41	0.16	P&A			
<b>Yearly Change</b>			<b>-2.10</b>			<b>-0.81</b>						<b>-0.31</b>			<b>-1.64</b>				
Jan-25	159.81	5459.89	-0.40	155.38	5469.32	-0.38	P&A			114.79	5470.71	-0.24	145.82	5438.08	-0.33	P&A			
Feb-25	160.22	5459.48	-0.41	156.28	5468.42	-0.90	P&A			115.10	5470.40	-0.31	146.16	5437.74	-0.34	P&A			
Mar-25	160.36	5459.34	-0.14	156.30	5468.40	-0.02	P&A			115.19	5470.31	-0.09	146.28	5437.62	-0.12	P&A			
Apr-25	160.38	5459.32	-0.02	156.14	5468.56	0.16	P&A			115.26	5470.24	-0.07	146.30	5437.60	-0.02	P&A			
May-25	160.58	5459.12	-0.20	156.37	5468.33	-0.23	P&A			115.41	5470.09	-0.15	146.49	5437.41	-0.19	P&A			
Jun-25	160.62	5459.08	-0.04	156.55	5468.15	-0.18	P&A			115.46	5470.04	-0.05	146.56	5437.34	-0.07	P&A			
Jul-25	160.69	5459.01	-0.07	156.84	5467.86	-0.29	P&A			115.62	5469.88	-0.16	146.85	5437.05	-0.29	P&A			
Aug-25	160.93	5458.77	-0.24	157.15	5467.55	-0.31	P&A			115.48	5470.02	0.14	146.84	5437.06	0.01	P&A			
Sep-25	161.05	5458.65	-0.12	156.26	5468.44	0.89	P&A			115.48	5470.02	0.00	146.94	5436.96	-0.10	P&A			
Oct-25	161.47	5458.23	-0.42	156.31	5468.39	-0.05	P&A			115.77	5469.73	-0.29	147.29	5436.61	-0.35	P&A			
Nov-25	161.51	5458.19	-0.04	156.28	5468.42	0.03	P&A			115.79	5469.71	-0.02	147.32	5436.58	-0.03	P&A			
Dec-25	161.37	5458.33	0.14	156.25	5468.45	0.03	P&A			115.71	5469.79	0.08	147.20	5436.70	0.12	P&A			
<b>Yearly Change</b>			<b>-1.96</b>			<b>-1.25</b>						<b>-1.16</b>			<b>-1.71</b>				
Jan-26	161.74	5457.96	-0.37	156.28	5468.42	-0.03	P&A			116.03	5469.47	-0.32	147.61	5436.29	-0.41	P&A			
Feb-26	161.37	5458.33	0.37	155.89	5468.81	0.39	P&A			115.86	5469.64	0.17	147.26	5436.64	0.35	P&A			
Mar-26	162.07	5457.63	-0.70	156.19	5468.51	-0.30	P&A			116.38	5469.12	-0.52	147.98	5435.92	-0.72	P&A			
Apr-26																			
May-26																			
Jun-26																			
Jul-26																			
Aug-26																			
Sep-26																			
Oct-26																			
Nov-26																			
Dec-26																			
<b>Yearly Change</b>			<b>-0.70</b>			<b>0.06</b>						<b>-0.67</b>			<b>-0.78</b>				

Montana Bureau of Mines and Geology  
 East Camp Alluvial Water-Level Elevations  
 Site Name/Monthly Elevations

DATE MO/YR  (MP Elev.)	LP-07 ELEV.		MO. DIFF (FT)	LP-08 ELEV.		MO. DIFF (FT)	LP-09 ELEV.		MO. DIFF (FT)	LP-10 ELEV.		MO. DIFF (FT)	LP-11 ELEV.		MO. DIFF (FT)	LP-12 ELEV.		MO. DIFF (FT)
	SWL (FT)	SI-93-98' (FT)		SWL (FT)	SI-81-96' (FT)		SWL (FT)	SI-82-102' (FT)		SWL (FT)	SI-132-162' (FT)		SWL (FT)	SI-247-277' (FT)		SWL (FT)	SI-110-130' (FT)	
		5617.00			5577.29			5561.52			5609.12			5609.61			5543.82	5548.71
Jan-24	98.22	5518.78	0.01	94.46	5482.83	4.32	92.65	5468.87	0.07	134.90	5474.22	0.03	P&A			87.99	5455.83	0.34
Feb-24	98.22	5518.78	0.00	94.42	5482.87	0.04	92.94	5468.58	-0.29	134.71	5474.41	0.19	P&A			87.96	5455.86	0.03
Mar-24	98.24	5518.76	-0.02	94.18	5483.11	0.24	92.86	5468.66	0.08	134.72	5474.40	-0.01	P&A			87.81	5456.01	0.15
Apr-24	98.25	5518.75	-0.01	94.32	5482.97	-0.14	93.15	5468.37	-0.29	135.26	5473.86	-0.54	P&A			87.65	5456.17	0.16
May-24	98.26	5518.74	-0.01	94.46	5482.83	-0.14	93.24	5468.28	-0.09	135.05	5474.07	0.21	P&A			87.65	5456.17	0.00
Jun-24	98.21	5518.79	0.05	94.58	5482.71	-0.12	93.20	5468.32	0.04	135.01	5474.11	0.04	P&A			87.47	5456.35	0.18
Jul-24	98.25	5518.75	-0.04	94.80	5482.49	-0.22	93.10	5468.42	0.10	135.08	5474.04	-0.07	P&A			87.39	5456.43	0.08
Aug-24	98.26	5518.74	-0.01	94.83	5482.46	-0.03	93.17	5468.35	-0.07	135.20	5473.92	-0.12	P&A			87.36	5456.46	0.03
Sep-24	98.26	5518.74	0.00	94.83	5482.46	0.00	93.46	5468.06	-0.29	135.24	5473.88	-0.04	P&A			87.46	5456.36	-0.10
Oct-24	98.31	5518.69	-0.05	94.88	5482.41	-0.05	93.31	5468.21	0.15	135.09	5474.03	0.15	P&A			91.93	5456.78	0.42
Nov-24	98.30	5518.70	0.01	94.84	5482.45	0.04	93.42	5468.10	-0.11	135.04	5474.08	0.05	P&A			91.92	5456.79	0.01
Dec-24	98.27	5518.73	0.03	94.86	5482.43	-0.02	92.98	5468.54	0.44	135.01	5474.11	0.03	P&A			91.91	5456.80	0.01
<b>Yearly Change</b>			<b>-0.04</b>			<b>3.92</b>			<b>-0.26</b>			<b>-0.08</b>						<b>1.31</b>
Jan-25	98.23	5518.77	0.04	94.86	5482.43	0.00	92.91	5468.61	0.07	135.04	5474.08	-0.03	P&A			91.51	5457.20	0.40
Feb-25	98.22	5518.78	0.01	94.91	5482.38	-0.05	93.01	5468.51	-0.10	135.01	5474.11	0.03	P&A			91.47	5457.24	0.04
Mar-25	98.23	5518.77	-0.01	94.89	5482.40	0.02	92.94	5468.58	0.07	135.19	5473.93	-0.18	P&A			91.69	5457.02	-0.22
Apr-25	98.22	5518.78	0.01	94.94	5482.35	-0.05	93.08	5468.44	-0.14	135.21	5473.91	-0.02	P&A			92.02	5456.69	-0.33
May-25	98.24	5518.76	-0.02	94.92	5482.37	0.02	93.12	5468.40	-0.04	135.26	5473.86	-0.05	P&A			92.01	5456.70	0.01
Jun-25	98.23	5518.77	0.01	94.94	5482.35	-0.02	93.26	5468.26	-0.14	135.17	5473.95	0.09	P&A			92.15	5456.56	-0.14
Jul-25	98.21	5518.79	0.02	94.92	5482.37	0.02	93.41	5468.11	-0.15	135.36	5473.76	-0.19	P&A			92.34	5456.37	-0.19
Aug-25	98.24	5518.76	-0.03	94.94	5482.35	-0.02	93.32	5468.20	0.09	135.49	5473.63	-0.13	P&A			92.37	5456.34	-0.03
Sep-25	98.26	5518.74	-0.02	94.97	5482.32	-0.03	93.35	5468.17	-0.03	135.32	5473.80	0.17	P&A			92.48	5456.23	-0.11
Oct-25	98.28	5518.72	-0.02	96.10	5481.19	-1.13	93.63	5467.89	-0.28	135.44	5473.68	-0.12	P&A			92.64	5456.07	-0.16
Nov-25	98.32	5518.68	-0.04	96.11	5481.18	-0.01	93.63	5467.89	0.00	135.41	5473.71	0.03	P&A			92.65	5456.06	-0.01
Dec-25	98.28	5518.72	0.04	96.09	5481.20	0.02	93.54	5467.98	0.09	135.22	5473.90	0.19	P&A			92.56	5456.15	0.09
<b>Yearly Change</b>			<b>-0.01</b>			<b>-1.23</b>			<b>-0.56</b>			<b>-0.21</b>						<b>-0.65</b>
Jan-26	98.27	5518.73	0.01	96.10	5481.19	-0.01	93.74	5467.78	-0.20	135.50	5473.62	-0.28	P&A			92.73	5455.98	-0.17
Feb-26	98.21	5518.79	0.06	96.03	5481.26	0.07	93.61	5467.91	0.13	135.18	5473.94	0.32	P&A			92.69	5456.02	0.04
Mar-26	98.21	5518.79	0.00	96.04	5481.25	-0.01	93.89	5467.63	-0.28	135.58	5473.54	-0.40	P&A			92.87	5455.84	-0.18
Apr-26																		
May-26																		
Jun-26																		
Jul-26																		
Aug-26																		
Sep-26																		
Oct-26																		
Nov-26																		
Dec-26																		
<b>Yearly Change</b>			<b>0.07</b>			<b>0.05</b>			<b>-0.35</b>			<b>-0.36</b>						<b>-0.31</b>

Montana Bureau of Mines and Geology  
 East Camp Alluvial Water-Level Elevations  
 Site Name/Monthly Elevations

DATE MO/YR  (MP Elev.)	LP-13 ELEV.		MO. DIFF (FT)	LP-14 ELEV.		MO. DIFF (FT)	LP-15 ELEV.		MO. DIFF (FT)	LP-16 ELEV.		MO. DIFF (FT)	*LP-17 ELEV.		MO. DIFF (FT)	LP-17R ELEV.		MO. DIFF (FT)	
	SWL (FT)	SI-219-239' (FT)		SWL (FT)	SI-85-105' (FT)		SWL (FT)	SI-218.3-238.3' (FT)		SWL (FT)	SI-103.4-123.4' (FT)		SWL (FT)	SI-201-226' (FT)		SWL (FT)	SI-17-221' (FT)		
		5543.05	5548.07	5525.68	5526.36	5528.73		5520.23			5519.88			5623.34	5621.54			5619.09	
Jan-24	91.70	5451.35	0.28	70.24	5456.12	0.37	NR			94.47	5425.41	0.20	P&A				179.03	5440.06	0.27
Feb-24	91.82	5451.23	-0.12	70.24	5456.12	0.00	NR			94.65	5425.23	-0.18	P&A				179.20	5439.89	-0.17
Mar-24	91.67	5451.38	0.15	69.95	5456.41	0.29	NR			94.45	5425.43	0.20	P&A				178.90	5440.19	0.30
Apr-24	91.61	5451.44	0.06	69.93	5456.43	0.02	NR			94.43	5425.45	0.02	P&A				178.93	5440.16	-0.03
May-24	91.52	5451.53	0.09	69.83	5456.53	0.10	NR			94.32	5425.56	0.11	P&A				178.84	5440.25	0.09
Jun-24	91.49	5451.56	0.03	69.77	5456.59	0.06	NR			94.25	5425.63	0.07	P&A				178.81	5440.28	0.03
Jul-24	91.45	5451.60	0.04	69.69	5456.67	0.08	NR			94.12	5425.76	0.13	P&A				178.71	5440.38	0.10
Aug-24	91.36	5451.69	0.09	69.65	5456.71	0.04	NR			94.09	5425.79	0.03	P&A				178.66	5440.43	0.05
Sep-24	91.34	5451.71	0.02	69.71	5456.65	-0.06	NR			94.13	5425.75	-0.04	P&A				178.85	5440.24	-0.19
Oct-24	95.99	5452.08	0.37	69.43	5456.93	0.28	NR			93.88	5426.00	0.25	P&A				178.51	5440.58	0.34
Nov-24	95.99	5452.08	0.00	69.38	5456.98	0.05	NR			93.88	5426.00	0.00	P&A				178.53	5440.56	-0.02
Dec-24	95.92	5452.15	0.07	72.36	5456.37	-0.61	NR			93.88	5426.00	0.00	P&A				178.08	5441.01	0.45
<b>Yearly Change</b>			<b>1.08</b>			<b>0.62</b>			<b>0.00</b>			<b>0.79</b>			<b>0.00</b>				<b>1.22</b>
Jan-25	94.94	5453.13	0.98	71.95	5456.78	0.41	NR			92.58	5427.30	1.30	P&A				177.80	5441.29	0.28
Feb-25	95.51	5452.56	-0.57	71.98	5456.75	-0.03	NR			93.16	5426.72	-0.58	P&A				177.78	5441.31	0.02
Mar-25	96.10	5451.97	-0.59	72.34	5456.39	-0.36	NR			93.85	5426.03	-0.69	P&A				178.20	5440.89	-0.42
Apr-25	96.31	5451.76	-0.21	72.69	5456.04	-0.35	NR			94.09	5425.79	-0.24	P&A				178.54	5440.55	-0.34
May-25	96.39	5451.68	-0.08	72.70	5456.03	-0.01	NR			94.03	5425.85	0.06	P&A				178.45	5440.64	0.09
Jun-25	96.50	5451.57	-0.11	72.90	5455.83	-0.20	NR			94.06	5425.82	-0.03	P&A				178.54	5440.55	-0.09
Jul-25	96.60	5451.47	-0.10	73.07	5455.66	-0.17	NR			94.13	5425.75	-0.07	P&A				178.66	5440.43	-0.12
Aug-25	96.59	5451.48	0.01	73.12	5455.61	-0.05	NR			94.03	5425.85	0.10	P&A				178.64	5440.45	0.02
Sep-25	96.48	5451.59	0.11	73.17	5455.56	-0.05	NR			93.94	5425.94	0.09	P&A				178.69	5440.40	-0.05
Oct-25	96.56	5451.51	-0.08	73.31	5455.42	-0.14	NR			94.05	5425.83	-0.11	P&A				178.86	5440.23	-0.17
Nov-25	96.46	5451.61	0.10	73.29	5455.44	0.02	NR			94.02	5425.86	0.03	P&A				178.82	5440.27	0.04
Dec-25	96.45	5451.62	0.01	73.25	5455.48	0.04	NR			93.88	5426.00	0.14	P&A				178.68	5440.41	0.14
<b>Yearly Change</b>			<b>-0.53</b>			<b>-0.89</b>			<b>0.00</b>			<b>0.00</b>			<b>0.00</b>				<b>-0.60</b>
Jan-26	96.51	5451.56	-0.06	73.42	5455.31	-0.17	NR			93.96	5425.92	-0.08	P&A				178.81	5440.28	-0.13
Feb-26	96.50	5451.57	0.01	73.46	5455.27	-0.04	NR			93.91	5425.97	0.05	P&A				178.69	5440.40	0.12
Mar-26	96.75	5451.32	-0.25	73.62	5455.11	-0.16	NR			93.99	5425.89	-0.08	P&A				178.86	5440.23	-0.17
Apr-26																			
May-26																			
Jun-26																			
Jul-26																			
Aug-26																			
Sep-26																			
Oct-26																			
Nov-26																			
Dec-26																			
<b>Yearly Change</b>			<b>-0.30</b>			<b>-0.37</b>			<b>0.00</b>			<b>-0.11</b>			<b>0.00</b>				<b>-0.18</b>



**Montana Bureau of Mines and Geology  
Butte Mine Flooding Monitoring**

GWIC ID	DATE	4597			4604			4611		
		AMC-5 SWL	Elevation	Mo Change	AMC-6 SWL	Elevation	Mo Change*	AMC-8 SWL	Elevation	Mo Change
			5509.21			5492.48	5489.62		5524.03	
	01/29/24	72.86	5436.35	0.09	33.60	5456.02	-1.49	65.87	5458.16	0.21
	02/27/24	72.72	5436.49	0.14	32.61	5457.01	0.99	65.72	5458.31	0.15
	03/29/24	72.55	5436.66	0.17	32.61	5457.01	0.00	65.55	5458.48	0.17
	04/29/24	72.65	5436.56	-0.10	32.22	5457.40	0.39	65.39	5458.64	0.16
	05/28/24	72.76	5436.45	-0.11	32.73	5456.89	-0.51	65.26	5458.77	0.13
	06/28/24	72.83	5436.38	-0.07	32.78	5456.84	-0.05	65.13	5458.90	0.13
	07/28/24	72.97	5436.24	-0.14	32.81	5456.81	-0.03	65.04	5458.99	0.09
	08/31/24	73.05	5436.16	-0.08	32.74	5456.88	0.07	64.94	5459.09	0.10
	09/25/24	73.14	5436.07	-0.09	32.62	5457.00	0.12	64.87	5459.16	0.07
	10/31/24	73.17	5436.04	-0.03	32.61	5457.01	0.01	64.78	5459.25	0.09
	11/25/24	73.25	5435.96	-0.08	32.75	5456.87	-0.14	64.67	5459.36	0.11
	12/24/24	73.34	5435.87	-0.09	32.88	5456.74	-0.13	64.58	5459.45	0.09
	<b>Annual WL Change</b>			<b>-0.39</b>			<b>-0.77</b>			<b>1.50</b>
	01/27/25	73.74	5435.47	-0.40	33.10	5456.52	-0.22	64.50	5459.53	0.08
	02/27/25	73.38	5435.83	0.36	33.20	5456.42	-0.10	64.45	5459.58	0.05
	03/29/25	73.56	5435.65	-0.18	33.33	5456.29	-0.13	64.37	5459.66	0.08
	04/29/25	73.65	5435.56	-0.09	33.09	5456.53	0.24	64.36	5459.67	0.01
	05/28/25	73.59	5435.62	0.06	<b>33.53</b>	5456.09	-0.44	64.37	5459.66	-0.01
	06/28/25	73.63	5435.58	-0.04	33.55	5456.07	-0.02	64.40	5459.63	-0.03
	07/28/25	73.63	5435.58	0.00	33.54	5456.08	0.01	64.46	5459.57	-0.06
	08/31/25	73.51	5435.70	0.12	33.22	5456.40	0.32	64.50	5459.53	-0.04
	09/24/25	73.31	5435.90	0.20	32.98	5456.64	0.24	64.58	5459.45	-0.08
	10/31/25	73.30	5435.91	0.01	33.03	5456.59	-0.05	65.90	5458.13	-1.32
	11/25/25	73.43	5435.78	-0.13	33.15	5456.47	-0.12	65.82	5458.21	0.08
	12/24/25	73.45	5435.76	-0.02	33.33	5456.29	-0.18	65.73	5458.30	0.09
	<b>Annual WL Change</b>			<b>-0.11</b>			<b>-0.45</b>			<b>-1.15</b>
	01/27/26	73.59	5435.62	-0.14	33.57	5456.05	-0.24	65.67	5458.36	0.06
	02/23/26	73.64	5435.57	-0.05	33.65	5455.97	-0.08	65.60	5458.43	0.07
	03/29/26	73.59	5435.62	0.05	33.81	5455.81	-0.16	65.55	5458.48	0.05
	04/29/26									
	05/28/26									
	06/28/26									
	07/28/26									
	08/31/26									
	09/24/26									
	10/31/26									
	11/25/26									
	12/24/26									
	<b>Annual WL Change</b>			<b>-0.14</b>			<b>-0.48</b>			<b>0.18</b>

**Montana Bureau of Mines and Geology  
Butte Mine Flooding Monitoring**

GWIC ID	155569			4656			4673			
	DATE	AMC-10	AMC-12	AMC-13	SWL	Elevation	Mo Change	SWL	Elevation	Mo Change
		SWL	Elevation	Mo Change	SWL	Elevation	Mo Change	SWL	Elevation	Mo Change
			5511.26			5479.58			5475.34	
	01/29/24	DRY			22.77	5456.81	-0.24	20.78	5454.56	-0.24
	02/27/24	DRY			22.87	5456.71	-0.10	20.86	5454.48	-0.08
	03/29/24	DRY			22.92	5456.66	-0.05	20.80	5454.54	0.06
	04/29/24	DRY			22.86	5456.72	0.06	20.78	5454.56	0.02
	05/28/24	DRY			22.83	5456.75	0.03	20.73	5454.61	0.05
	06/28/24	DRY			22.77	5456.81	0.06	20.72	5454.62	0.01
	07/28/24	DRY			22.65	5456.93	0.12	20.64	5454.70	0.08
	08/31/24	DRY			22.50	5457.08	0.15	20.56	5454.78	0.08
	09/25/24	DRY			22.44	5457.14	0.06	20.52	5454.82	0.04
	10/31/24	DRY			22.65	5456.93	-0.21	20.73	5454.61	-0.21
	11/25/24	DRY			22.80	5456.78	-0.15	20.93	5454.41	-0.20
	12/24/24	DRY			22.99	5456.59	-0.19	21.12	5454.22	-0.19
<b>Annual WL Change</b>				<b>0.00</b>			<b>-0.46</b>			<b>-0.58</b>
	01/27/25	DRY			23.29	5456.29	-0.30	21.36	5453.98	-0.24
	02/27/25	DRY			23.46	5456.12	-0.17	21.49	5453.85	-0.13
	03/29/25	DRY			23.58	5456.00	-0.12	21.56	5453.78	-0.07
	04/29/25	DRY			23.68	5455.90	-0.10	21.59	5453.75	-0.03
	05/28/25	DRY			23.65	5455.93	0.03	21.42	5453.92	0.17
	06/28/25	DRY			23.55	5456.03	0.10	21.31	5454.03	0.11
	07/28/25	DRY			23.44	5456.14	0.11	21.19	5454.15	0.12
	08/31/25	DRY			23.17	5456.41	0.27	20.94	5454.40	0.25
	09/24/25	DRY			22.98	5456.60	0.19	20.87	5454.47	0.07
	10/31/25	DRY			23.05	5456.53	-0.07	20.96	5454.38	-0.09
	11/25/25	DRY			23.23	5456.35	-0.18	21.11	5454.23	-0.15
	12/24/25	DRY			23.41	5456.17	-0.18	21.27	5454.07	-0.16
<b>Annual WL Change</b>				<b>0.00</b>			<b>-0.42</b>			<b>-0.15</b>
	01/27/26	DRY			23.67	5455.91	-0.26	21.50	5453.84	-0.23
	02/23/26	DRY			23.81	5455.77	-0.14	21.62	5453.72	-0.12
	03/29/26	DRY			24.02	5455.56	-0.21	21.75	5453.59	-0.13
	04/29/26									
	05/28/26									
	06/28/26									
	07/28/26									
	08/31/26									
	09/24/26									
	10/31/26									
	11/25/26									
	12/24/26									
<b>Annual WL Change</b>				<b>0.00</b>			<b>-0.61</b>			<b>-0.48</b>

**Montana Bureau of Mines and Geology  
Butte Mine Flooding Monitoring**

GWIC ID	4702			5018			5034			
	DATE	AMC-15		AMC-23		AMC-24				
		SWL	Elevation	Mo Change	SWL	Elevation	Mo Change	SWL	Elevation	Mo Change
			5559.00		<b>5448.26</b>				<b>5452.03</b>	
	01/29/24	95.91	5463.09	0.17	8.87	5439.39	0.01	11.11	5440.92	0.00
	02/27/24	95.82	5463.18	0.09	8.60	5439.66	0.27	10.94	5441.09	0.17
	03/29/24	95.68	5463.32	0.14	8.32	5439.94	0.28	10.72	5441.31	0.22
	04/29/24	95.50	5463.50	0.18	8.21	5440.05	0.11	10.74	5441.29	-0.02
	05/28/24	95.56	5463.44	-0.06	8.88	5439.38	-0.67	11.06	5440.97	-0.32
	06/28/24	95.68	5463.32	-0.12	8.89	5439.37	-0.01	11.10	5440.93	-0.04
	07/28/24	95.93	5463.07	-0.25	8.98	5439.28	-0.09	11.12	5440.91	-0.02
	08/31/24	95.99	5463.01	-0.06	8.95	5439.31	0.03	11.15	5440.88	-0.03
	09/25/24	95.74	5463.26	0.25	8.85	5439.41	0.10	11.08	5440.95	0.07
	10/31/24	95.58	5463.42	0.16	9.17	5439.09	-0.32	11.20	5440.83	-0.12
	11/25/24	95.57	5463.43	0.01	9.12	5439.14	0.05	11.27	5440.76	-0.07
	12/24/24	95.34	5463.66	0.23	9.07	5439.19	0.05	11.26	5440.77	0.01
<b>Annual WL Change</b>				<b>0.74</b>			<b>-0.19</b>			<b>-0.15</b>
	01/27/25	94.57	5464.43	0.77	9.04	5439.22	0.03	11.21	5440.82	0.05
	02/27/25	95.56	5463.44	-0.99	8.78	5439.48	0.26	11.19	5440.84	0.02
	03/29/25	95.68	5463.32	-0.12	8.80	5439.46	-0.02	11.11	5440.92	0.08
	04/29/25	95.92	5463.08	-0.24	9.10	5439.16	-0.30	11.14	5440.89	-0.03
	05/28/25	96.05	5462.95	-0.13	8.85	5439.41	0.25	11.09	5440.94	0.05
	06/28/25	96.16	5462.84	-0.11	8.93	5439.33	-0.08	11.19	5440.84	-0.10
	07/28/25	96.40	5462.60	-0.24	8.89	5439.37	0.04	11.23	5440.80	-0.04
	08/31/25	96.41	5462.59	-0.01	8.81	5439.45	0.08	11.00	5441.03	0.23
	09/24/25	96.44	5462.56	-0.03	8.62	5439.64	0.19	10.96	5441.07	0.04
	10/31/25	96.23	5462.77	0.21	8.97	5439.29	-0.35	11.05	5440.98	-0.09
	11/25/25	96.16	5462.84	0.07	8.97	5439.29	0.00	11.18	5440.85	-0.13
	12/24/25	96.16	5462.84	0.00	8.88	5439.38	0.09	11.17	5440.86	0.01
<b>Annual WL Change</b>				<b>-0.82</b>			<b>0.19</b>			<b>0.09</b>
	01/27/26	96.34	5462.66	-0.18	8.92	5439.34	-0.04	11.21	5440.82	-0.04
	02/23/26	96.16	5462.84	0.18	8.90	5439.36	0.02	11.27	5440.76	-0.06
	03/29/26	96.53	5462.47	-0.37	8.90	5439.36	0.00	11.17	5440.86	0.10
	04/29/26									
	05/28/26									
	06/28/26									
	07/28/26									
	08/31/26									
	09/24/26									
	10/31/26									
	11/25/26									
	12/24/26									
<b>Annual WL Change</b>				<b>-0.37</b>			<b>-0.02</b>			<b>0.00</b>

**Montana Bureau of Mines and Geology  
Butte Mine Flooding Monitoring**

GWIC ID	150401 GS-41S			150402 GS-41D			150409 GS-44S		
	SWL	ELEV.	Mo. Diff	SWL	ELEV.	Mo. Diff	SWL	ELEV.	Mo. Diff
		5491.90	(ft)		5491.30	5491.39		5476.20	<b>5478.45</b>
01/29/24	P&A			P&A			22.04	5456.41	-0.30
02/27/24	P&A			P&A			22.19	5456.26	-0.15
03/29/24	P&A			P&A			22.21	5456.24	-0.02
04/29/24	P&A			P&A			22.05	5456.40	0.16
05/28/24	P&A			P&A			22.06	5456.39	-0.01
06/27/24	P&A			P&A			21.99	5456.46	0.07
07/27/24	P&A			P&A			21.81	5456.64	0.18
08/31/24	P&A			P&A			21.67	5456.78	0.14
09/25/24	P&A			P&A			21.65	5456.80	0.02
10/26/24	P&A			P&A			21.88	5456.57	-0.23
11/25/24	P&A			P&A			22.13	5456.32	-0.25
12/24/24	P&A			P&A			22.36	5456.09	-0.23
<b>Yearly Change</b>			<b>0.00</b>			<b>0.00</b>			<b>-0.62</b>
01/27/25	P&A			P&A			22.66	5455.79	-0.30
02/27/25	P&A			P&A			22.86	5455.59	-0.20
03/29/25	P&A			P&A			22.96	5455.49	-0.10
04/28/25	P&A			P&A			23.02	5455.43	-0.06
05/28/25	P&A			P&A			22.91	5455.54	0.11
06/27/25	P&A			P&A			22.68	5455.77	0.23
07/27/25	P&A			P&A			22.48	5455.97	0.20
08/31/25	P&A			P&A			22.19	5456.26	0.29
09/24/25	P&A			P&A			22.10	5456.35	0.09
10/26/25	P&A			P&A			22.25	5456.20	-0.15
11/25/25	P&A			P&A			22.42	5456.03	-0.17
12/24/25	P&A			P&A			22.64	5455.81	-0.22
<b>Yearly Change</b>			<b>0.00</b>			<b>0.00</b>			<b>-0.28</b>
01/27/26	P&A			P&A			22.92	5455.53	-0.28
02/23/26	P&A			P&A			23.02	5455.43	-0.10
03/29/26	P&A			P&A			23.16	5455.29	-0.14
04/28/26	P&A			P&A					
05/28/26	P&A			P&A					
06/27/26	P&A			P&A					
07/27/26	P&A			P&A					
08/31/26	P&A			P&A					
09/24/26	P&A			P&A					
10/26/26	P&A			P&A					
11/25/26	P&A			P&A					
12/24/26	P&A			P&A					
<b>Yearly Change</b>			<b>0.00</b>			<b>0.00</b>			<b>-0.52</b>

Measuring point elevations changed October 2008 for wells GS-44S, GS-44D, GS-46S, and GS-46D

**Montana Bureau of Mines and Geology  
Butte Mine Flooding Monitoring**

GWIC ID	150411 GS-44D			150412 GS-46S			150413 GS-46D		
	SWL	ELEV.	Mo. Diff	SWL	ELEV.	Mo. Diff	SWL	ELEV.	Mo. Diff
		5476.20	<b>5478.48</b>		5483.80	<b>5486.18</b>		5484.00	<b>5486.32</b>
01/29/24	22.85	5455.63	-0.27	27.53	5458.65	-0.22	27.56	5458.76	-0.16
02/27/24	22.92	5455.56	-0.07	27.68	5458.50	-0.15	27.70	5458.62	-0.14
03/29/24	22.89	5455.59	0.03	27.81	5458.37	-0.13	27.79	5458.53	-0.09
04/29/24	22.77	5455.71	0.12	27.82	5458.36	-0.01	27.80	5458.52	-0.01
05/28/24	22.79	5455.69	-0.02	27.84	5458.34	-0.02	27.84	5458.48	-0.04
06/27/24	22.76	5455.72	0.03	27.82	5458.36	0.02	27.86	5458.46	-0.02
07/27/24	22.65	5455.83	0.11	27.70	5458.48	0.12	27.75	5458.57	0.11
08/31/24	22.55	5455.93	0.10	27.51	5458.67	0.19	27.59	5458.73	0.16
09/25/24	22.51	5455.97	0.04	27.40	5458.78	0.11	27.45	5458.87	0.14
10/26/24	22.69	5455.79	-0.18	27.50	5458.68	-0.10	27.53	5458.79	-0.08
11/25/24	22.90	5455.58	-0.21	27.66	5458.52	-0.16	27.69	5458.63	-0.16
12/24/24	23.09	5455.39	-0.19	27.88	5458.30	-0.22	27.87	5458.45	-0.18
<b>Yearly Change</b>			<b>-0.51</b>			<b>-0.57</b>			<b>-0.47</b>
01/27/25	23.35	5455.13	-0.26	28.11	5458.07	-0.23	28.06	5458.26	-0.19
02/27/25	23.52	5454.96	-0.17	28.29	5457.89	-0.18	28.24	5458.08	-0.18
03/29/25	23.61	5454.87	-0.09	28.43	5457.75	-0.14	28.41	5457.91	-0.17
04/28/25	23.64	5454.84	-0.03	28.63	5457.55	-0.20	28.46	5457.86	-0.05
05/28/25	23.55	5454.93	0.09	28.69	5457.49	-0.06	28.64	5457.68	-0.18
06/27/25	23.43	5455.05	0.12	28.56	5457.62	0.13	28.57	5457.75	0.07
07/27/25	23.29	5455.19	0.14	28.35	5457.83	0.21	28.40	5457.92	0.17
08/31/25	23.03	5455.45	0.26	28.11	5458.07	0.24	28.16	5458.16	0.24
09/24/25	22.90	5455.58	0.13	27.81	5458.37	0.30	27.90	5458.42	0.26
10/26/25	23.01	5455.47	-0.11	27.91	5458.27	-0.10	27.96	5458.36	-0.06
11/25/25	23.18	5455.30	-0.17	28.09	5458.09	-0.18	28.11	5458.21	-0.15
12/24/25	23.36	5455.12	-0.18	28.29	5457.89	-0.20	28.29	5458.03	-0.18
<b>Yearly Change</b>			<b>-0.27</b>			<b>-0.41</b>			<b>-0.42</b>
01/27/26	23.60	5454.88	-0.24	28.52	5457.66	-0.23	28.52	5457.80	-0.23
02/23/26	23.76	5454.72	-0.16	28.70	5457.48	-0.18	28.69	5457.63	-0.17
03/29/26	23.88	5454.60	-0.12	28.90	5457.28	-0.20	28.87	5457.45	-0.18
04/28/26									
05/28/26									
06/27/26									
07/27/26									
08/31/26									
09/24/26									
10/26/26									
11/25/26									
12/24/26									
<b>Yearly Change</b>			<b>-0.52</b>			<b>-0.61</b>			<b>-0.58</b>

Measuring point elevations changed October 2008 for wells GS-44S, GS-44D, GS-46S, and GS-46D

**Montana Bureau of Mines and Geology  
Butte Mine Flooding Monitoring**

GWIC ID	137598			247722			166182		
	AMW-8	5499.98		AMW-20			AMW-22		
	SWL	ELEV.	Mo. Diff	SWL	Elev	Mo. Diff	SWL	ELEV.	Mo. Diff
		5496.34	<b>5496.05</b>	5486.78	5487.27	(ft)	5497.42	5505.14	(ft)
01/29/24	42.49	5457.49	-0.19	28.19	5459.08	-0.10	47.67	5457.47	-0.06
02/27/24	42.60	5457.38	-0.11	28.29	5458.98	-0.10	47.68	5457.46	-0.01
03/29/24	42.65	5457.33	-0.05	27.64	5459.63	0.65	47.69	5457.45	-0.01
04/29/24	42.66	5457.32	-0.01	28.08	5459.19	-0.44	47.80	5457.34	-0.11
05/28/24	42.67	5457.31	-0.01	28.43	5458.84	-0.35	47.85	5457.29	-0.05
06/27/24	42.66	5457.32	0.01	28.48	5458.79	-0.05	47.91	5457.23	-0.06
07/27/24	42.64	5457.34	0.02	28.49	5458.78	-0.01	47.96	5457.18	-0.05
08/31/24	42.57	5457.41	0.07	28.34	5458.93	0.15	47.87	5457.27	0.09
09/25/24	42.47	5457.51	0.10	28.51	5458.76	-0.17	47.76	5457.38	0.11
10/26/24	42.53	5457.45	-0.06	28.51	5458.76	0.00	47.71	5457.43	0.05
11/25/24	42.66	5457.32	-0.13	28.77	5458.50	-0.26	47.75	5457.39	-0.04
12/24/24	42.94	5457.04	-0.28	29.17	5458.10	-0.40	47.84	5457.30	-0.09
<b>Yearly Change</b>			<b>-0.64</b>			<b>-1.08</b>			<b>-0.23</b>
01/27/25	43.07	5456.91	-0.13	29.29	5457.98	-0.12	48.03	5457.11	-0.19
02/27/25	43.26	5456.72	-0.19	29.48	5457.79	-0.19	48.11	5457.03	-0.08
03/29/25	43.40	5456.58	-0.14	29.38	5457.89	0.10	48.26	5456.88	-0.15
04/28/25	43.56	5456.42	-0.16	29.30	5457.97	0.08	48.49	5456.65	-0.23
05/28/25	43.64	5456.34	-0.08	28.88	5458.39	0.42	48.57	5456.57	-0.08
06/27/25	43.59	5456.39	0.05	28.95	5458.32	-0.07	48.64	5456.50	-0.07
07/27/25	43.52	5456.46	0.07	28.86	5458.41	0.09	48.68	5456.46	-0.04
08/31/25	43.40	5456.58	0.12	28.40	5458.87	0.46	48.51	5456.63	0.17
09/24/25	43.19	5456.79	0.21	28.01	5459.26	0.39	48.29	5456.85	0.22
10/26/25	43.12	5456.86	0.07	28.29	5458.98	-0.28	48.23	5456.91	0.06
11/25/25	43.17	5456.81	-0.05	28.68	5458.59	-0.39	48.22	5456.92	0.01
12/24/25	43.31	5456.67	-0.14	28.79	5458.48	-0.11	48.48	5456.66	-0.26
<b>Yearly Change</b>			<b>-0.37</b>			<b>0.38</b>			<b>-0.64</b>
01/27/26	43.57	5456.41	-0.26	28.87	5458.40	-0.08	48.66	5456.48	-0.18
02/23/26	43.56	5456.42	0.01	29.02	5458.25	-0.15	48.73	5456.41	-0.07
03/29/26	43.80	5456.18	-0.24	28.74	5458.53	0.28	48.91	5456.23	-0.18
04/28/26									
05/28/26									
06/27/26									
07/27/26									
08/31/26									
09/24/26									
10/26/26									
11/25/26									
12/24/26									
<b>Yearly Change</b>			<b>-0.49</b>			<b>0.05</b>			<b>-0.43</b>

**Montana Bureau of Mines and Geology  
Butte Mine Flooding Monitoring**

GWIC ID	222920			222921			224152		
	BMF05-1			BMF05-2			BMF05-3		
	SWL	ELEV.	Mo. Diff	SWL	ELEV.	Mo. Diff	SWL	ELEV. <sup>1)</sup>	Mo. Diff
		5481.95	(ft)		5504.96	(ft)	5501.29	5500.17	(ft)
01/29/24	24.26	5457.69	-0.14	45.40	5459.56	-0.07	38.28	5461.89	-0.12
02/27/24	24.36	5457.59	-0.10	45.42	5459.54	-0.02	38.49	5461.68	-0.21
03/29/24	24.27	5457.68	0.09	45.39	5459.57	0.03	38.55	5461.62	-0.06
04/29/24	24.34	5457.61	-0.07	45.39	5459.57	0.00	38.61	5461.56	-0.06
05/28/24	23.79	5458.16	0.55	45.45	5459.51	-0.06	38.68	5461.49	-0.07
06/27/24	24.45	5457.50	-0.66	45.50	5459.46	-0.05	38.89	5461.28	-0.21
07/27/24	24.45	5457.50	0.00	45.45	5459.51	0.05	38.84	5461.33	0.05
08/31/24	24.31	5457.64	0.14	45.35	5459.61	0.10	38.67	5461.50	0.17
09/25/24	24.22	5457.73	0.09	45.15	5459.81	0.20	38.39	5461.78	0.28
10/26/24	24.30	5457.65	-0.08	45.02	5459.94	0.13	38.27	5461.90	0.12
11/25/24	24.49	5457.46	-0.19	45.07	5459.89	-0.05	38.34	5461.83	-0.07
12/24/24	24.81	5457.14	-0.32	45.08	5459.88	-0.01	38.47	5461.70	-0.13
<b>Yearly Change</b>			<b>-0.69</b>			<b>0.25</b>			<b>-0.31</b>
01/27/25	24.96	5456.99	-0.15	45.24	5459.72	-0.16	38.69	5461.48	-0.22
02/27/25	25.07	5456.88	-0.11	45.34	5459.62	-0.10	38.88	5461.29	-0.19
03/29/25	25.19	5456.76	-0.12	45.57	5459.39	-0.23	39.07	5461.10	-0.19
04/28/25	25.32	5456.63	-0.13	45.77	5459.19	-0.20	39.29	5460.88	-0.22
05/28/25	25.28	5456.67	0.04	45.94	5459.02	-0.17	39.43	5460.74	-0.14
06/27/25	25.22	5456.73	0.06	46.04	5458.92	-0.10	39.41	5460.76	0.02
07/27/25	25.17	5456.78	0.05	46.08	5458.88	-0.04	39.43	5460.74	-0.02
08/31/25	24.85	5457.10	0.32	45.99	5458.97	0.09	39.23	5460.94	0.20
09/24/25	24.56	5457.39	0.29	45.79	5459.17	0.20	38.96	5461.21	0.27
10/26/25	24.67	5457.28	-0.11	45.71	5459.25	0.08	38.82	5461.35	0.14
11/25/25	24.81	5457.14	-0.14	45.72	5459.24	-0.01	38.87	5461.30	-0.05
12/24/25	25.09	5456.86	-0.28	45.84	5459.12	-0.12	39.09	5461.08	-0.22
<b>Yearly Change</b>			<b>-0.28</b>			<b>-0.76</b>			<b>-0.62</b>
01/27/26	25.23	5456.72	-0.14	46.06	5458.90	-0.22	39.28	5460.89	-0.19
02/23/26	25.34	5456.61	-0.11	46.12	5458.84	-0.06	39.41	5460.76	-0.13
03/29/26	25.52	5456.43	-0.18	46.33	5458.63	-0.21	39.67	5460.50	-0.26
04/28/26									
05/28/26									
06/27/26									
07/27/26									
08/31/26									
09/24/26									
10/26/26									
11/25/26									
12/24/26									
<b>Yearly Change</b>			<b>-0.43</b>			<b>-0.49</b>			<b>-0.58</b>

1) Measuring point elevation changed April 2006 when well fitted with surface

**Montana Bureau of Mines and Geology  
Butte Mine Flooding Monitoring**

GWIC ID	224153 BMF05-4		
	SWL	ELEV.	Mo. Diff
		5542.37	(ft)
01/29/24	78.93	5463.44	0.15
02/27/24	78.83	5463.54	0.10
03/29/24	78.75	5463.62	0.08
04/29/24	78.61	5463.76	0.14
05/28/24	78.69	5463.68	-0.08
06/27/24	79.17	5463.20	-0.48
07/27/24	79.06	5463.31	0.11
08/31/24	79.29	5463.08	-0.23
09/25/24	78.82	5463.55	0.47
10/26/24	78.62	5463.75	0.20
11/25/24	78.65	5463.72	-0.03
12/24/24	78.47	5463.90	0.18
<b>Yearly Change</b>			<b>0.61</b>
01/27/25	78.49	5463.88	-0.02
02/27/25	78.69	5463.68	-0.20
03/29/25	78.82	5463.55	-0.13
04/28/25	79.06	5463.31	-0.24
05/28/25	79.19	5463.18	-0.13
06/27/25	79.36	5463.01	-0.17
07/27/25	79.58	5462.79	-0.22
08/31/25	79.59	5462.78	-0.01
09/24/25	79.55	5462.82	0.04
10/26/25	79.35	5463.02	0.20
11/25/25	79.27	5463.10	0.08
12/24/25	79.28	5463.09	-0.01
<b>Yearly Change</b>			<b>-0.81</b>
01/27/26	79.44	5462.93	-0.16
02/23/26	79.37	5463.00	0.07
03/29/26	79.69	5462.68	-0.32
04/28/26			
05/28/26			
06/27/26			
07/27/26			
08/31/26			
09/24/26			
10/26/26			
11/25/26			
12/24/26			
<b>Yearly Change</b>			<b>-0.41</b>

≥ mount cap.

Montana Bureau of Mines and Geology

Bedrock Water-Level Elevations

East Camp Mines and Bedrock Wells

Site Name/Monthly Elevations

DATE MO/YR (MP Elev)	ANSELMO* SWL (FT)	ELEV (FT)	MO. DIFF (FT)	BELMONT SWL (FT)	ELEV (FT)	MO. DIFF (FT)	BERKELEY PIT ELEV (FT)(1)	MO. DIFF (FT)	GRANITE MTN MINE SWL (FT)	ELEV (FT)	MO. DIFF (FT)	GRANITE MTN WELL SWL (FT)	ELEV (FT)	MO. DIFF (FT)	KELLEY SWL (FT)	ELEV (FT)	MO. DIFF (FT)	STEWARD SWL (FT)	ELEV (FT)	MO. DIFF (FT)
	5783.80	5782.10			5604.00					6051.80			6084.52		5877.52	5905.34	5906.27		5856.45	
Jan-24	404.91	5377.19	0.00	NA			5355.83	0.04	Abandoned			714.26	5370.26	-0.05	537.96	5368.31	-0.10	483.59	5372.86	-0.03
Feb-24	404.93	5377.17	-0.02	NA			5355.85	0.02	Abandoned			714.10	5370.42	0.16	537.65	5368.62	0.31	483.31	5373.14	0.28
Mar-24	404.91	5377.19	0.02	NA			5355.93	0.08	Abandoned			713.97	5370.55	0.13	537.79	5368.48	-0.14	483.41	5373.04	-0.10
May-24	404.92	5377.18	-0.01	NA			5355.95	0.02	Abandoned			714.21	5370.31	-0.24	538.02	5368.25	-0.23	483.66	5372.79	-0.25
May-24	404.97	5377.13	-0.05	NA			5355.97	0.02	Abandoned			714.18	5370.34	0.03	537.98	5368.29	0.04	483.65	5372.80	0.01
Jun-24	406.46	5375.64	-1.49	NA			5355.92	-0.05	Abandoned			714.17	5370.35	0.01	538.11	5368.16	-0.13	483.62	5372.83	0.03
Jul-24	406.44	5375.66	0.02	NA			5355.81	-0.11	Abandoned			714.49	5370.03	-0.32	538.21	5368.06	-0.10	484.11	5372.34	-0.49
Aug-24	407.11	5374.99	-0.67	NA			5355.79	-0.02	Abandoned			714.61	5369.91	-0.12	538.38	5367.89	-0.17	484.26	5372.19	-0.15
Sep-24	407.49	5374.61	-0.38	NA			5355.81	0.02	Abandoned			715.00	5369.52	-0.39	538.71	5367.56	-0.33	484.53	5371.92	-0.27
Oct-24	407.70	5374.40	-0.21	NA			5355.84	0.03	Abandoned			715.39	5369.13	-0.39	538.86	5367.41	-0.15	484.61	5371.84	-0.08
Nov-24	407.90	5374.20	-0.20	NA			5355.82	-0.02	Abandoned			715.47	5369.05	-0.08	539.11	5367.16	-0.25	484.72	5371.73	-0.11
Dec-24	407.91	5374.19	-0.01	NA			5355.81	-0.01	Abandoned			715.47	5369.05	0.00	539.17	5367.10	-0.06	484.74	5371.71	-0.02
Yearly Change			-3.00					0.02			0.00			-1.26			-1.31			-1.18
Jan-25	407.78	5374.32	0.13	NA			5355.80	-0.01	Abandoned			715.29	5369.23	0.18	539.12	5367.15	0.05	484.64	5371.81	0.10
Feb-25	407.85	5374.25	-0.07	NA			5355.86	0.06	Abandoned			715.43	5369.09	-0.14	539.21	5367.06	-0.09	484.77	5371.68	-0.13
Mar-25	407.87	5374.23	-0.02	NA			5355.83	-0.03	Abandoned			715.45	5369.07	-0.02	539.26	5367.01	-0.05	484.99	5371.46	-0.22
Apr-25	407.84	5374.26	0.03	NA			5355.81	-0.02	Abandoned			715.41	5369.11	0.04	539.19	5367.08	0.07	485.14	5371.31	-0.15
May-25	407.57	5374.53	0.27	NA			5355.76	-0.05	Abandoned			715.14	5369.38	0.27	538.92	5367.35	0.27	484.94	5371.51	0.20
Jun-25	407.34	5374.76	0.23	NA			5355.72	-0.04	Abandoned			714.93	5369.59	0.21	538.80	5367.47	0.12	484.83	5371.62	0.11
Jul-25	407.45	5374.65	-0.11	NA			5355.71	-0.01	Abandoned			715.15	5369.37	-0.22	538.76	5367.51	0.04	485.03	5371.42	-0.20
Aug-25	407.47	5374.63	-0.02	NA			5355.74	0.03	Abandoned			715.14	5369.38	0.01	538.98	5367.29	-0.22	485.06	5371.39	-0.03
Sep-25	407.25	5374.85	0.22	NA			5355.74	0.00	Abandoned			714.86	5369.66	0.28	538.65	5367.62	0.33	484.80	5371.65	0.26
Oct-25	407.28	5374.82	-0.03	NA			5355.70	-0.04	Abandoned			714.95	5369.57	-0.09	538.65	5367.62	0.00	484.77	5371.68	0.03
Nov-25	407.20	5374.90	0.08	NA			5355.74	0.04	Abandoned			714.98	5369.54	-0.03	538.62	5367.65	0.03	484.85	5371.60	-0.08
Dec-25	406.84	5375.26	0.36	NA			5355.77	0.03	Abandoned			714.53	5369.99	0.45	538.21	5368.06	0.41	484.61	5371.84	0.24
Yearly Change			1.07					-0.04			0.00			0.94			0.96			0.13
Jan-26	407.08	5375.02	-0.24	NA			5355.79	0.02	Abandoned			714.85	5369.67	-0.32	538.34	5367.93	-0.13	484.65	5371.80	-0.04
Feb-26	406.46	5375.64	0.62	NA			5355.80	0.01	Abandoned			714.11	5370.41	0.74	537.74	5368.53	0.60	484.04	5372.41	0.61
Mar-26	405.66	5376.44	0.80	NA			5355.83	0.03	Abandoned			713.48	5371.04	0.63	536.09	5370.18	1.65	483.34	5373.11	0.70
Apr-26																				
May-26																				
Jun-26																				
Jul-26																				
Aug-26																				
Sep-26																				
Oct-26																				
Nov-26																				
Dec-26																				
Yearly Change			1.18					0.06			0.00			1.05			2.12			1.27

\* Measuring point elevation changed 3/91.

Dec 1992 Kelley Mine SWL is 1/21/93 measurement.

Kelley Mine measuring point changed 6/99; 11/08 measuring point elevation change.

(1) 12/97 Berkeley Pit water level adjusted based upon Cashell Engineers survey data. Correction lowered water-level 1.11ft.

Montana Bureau of Mines and Geology

Bedrock Water-Level Elevations

East Camp Mines and Bedrock Wells

Site Name/Monthly Elevations

DATE	WELL A	ELEV	MO. DIFF	WELL B	ELEV	MO. DIFF	WELL C	ELEV	MO. DIFF	WELL D-1	ELEV	MO. DIFF	WELL D-2	ELEV	MO. DIFF	WELL E	ELEV	MO. DIFF	WELL F	ELEV	MO. DIFF
MO/YR	SWL (FT)	(FT)	(FT)	SWL (FT)	(FT)	(FT)	SWL (FT)	(FT)	(FT)	SWL (FT)	(FT)	(FT)	SWL (FT)	(FT)	(FT)	SWL (FT)	(FT)	(FT)	SWL (FT)	(FT)	(FT)
(MP Elev)	5525.00	5526.51	5528.47		5557.82			5578.00			5591.54			5579.50			5562.40			5487.48	
Jan-24	158.24	5368.27	0.05	142.35	5415.47	-0.01	214.83	5363.17	0.04	225.33	5366.21	0.01	214.06	5365.44	-0.05	157.32	5405.08	-0.19	33.65	5453.83	-0.11
Feb-24	158.07	5368.44	0.17	142.26	5415.56	0.09	214.60	5363.40	0.23	225.21	5366.33	0.12	213.73	5365.77	0.33	157.20	5405.20	0.12	33.80	5453.68	-0.15
Mar-24	158.09	5368.42	-0.02	142.25	5415.57	0.01	214.56	5363.44	0.04	225.23	5366.31	-0.02	211.66	5367.84	2.07	157.36	5405.04	-0.16	33.83	5453.65	-0.03
May-24	158.25	5368.26	-0.16	142.60	5415.22	-0.35	214.66	5363.34	-0.10	225.44	5366.10	-0.21	214.08	5365.42	-2.42	157.69	5404.71	-0.33	33.81	5453.67	0.02
May-24	158.58	5367.93	-0.33	143.05	5414.77	-0.45	214.99	5363.01	-0.33	225.70	5365.84	-0.26	214.28	5365.22	-0.20	158.09	5404.31	-0.40	33.94	5453.54	-0.13
Jun-24	158.64	5367.87	-0.06	142.94	5414.88	0.11	214.88	5363.12	0.11	225.59	5365.95	0.11	214.12	5365.38	0.16	158.06	5404.34	0.03	33.95	5453.53	-0.01
Jul-24	158.57	5367.94	0.07	143.01	5414.81	-0.07	215.09	5362.91	-0.21	225.65	5365.89	-0.06	214.19	5365.31	-0.07	158.25	5404.15	-0.19	33.87	5453.61	0.08
Aug-24	158.59	5367.92	-0.02	143.15	5414.67	-0.14	215.47	5362.53	-0.38	225.96	5365.58	-0.31	214.26	5365.24	-0.07	158.49	5403.91	-0.24	33.75	5453.73	0.12
Sep-24	159.41	5367.10	-0.82	143.29	5414.53	-0.14	216.22	5361.78	-0.75	226.32	5365.22	-0.36	214.45	5365.05	-0.19	158.65	5403.75	-0.16	33.65	5453.83	0.10
Oct-24	159.41	5367.10	0.00	143.77	5414.05	-0.48	216.34	5361.66	-0.12	226.35	5365.19	-0.03	214.45	5365.05	0.00	158.70	5403.70	-0.05	33.50	5453.98	0.15
Nov-24	159.43	5367.08	-0.02	144.49	5413.33	-0.72	216.13	5361.87	0.21	226.25	5365.29	0.10	214.89	5364.61	-0.44	159.03	5403.37	-0.33	33.62	5453.86	-0.12
Dec-24	162.12	5366.35	-0.73	143.57	5414.25	0.92	215.97	5362.03	0.16	226.17	5365.37	0.08	215.08	5364.42	-0.19	158.11	5404.29	0.92	33.93	5453.55	-0.31
Yearly Change			-1.87			-1.23			-1.10			-0.83			-1.07			-0.98			-0.39
Jan-25	162.10	5366.37	0.02	143.70	5414.12	-0.13	215.99	5362.01	-0.02	226.41	5365.13	-0.24	215.60	5363.90	-0.52	158.22	5404.18	-0.11	34.03	5453.45	-0.10
Feb-25	162.07	5366.40	0.03	143.67	5414.15	0.03	216.05	5361.95	-0.06	226.08	5365.46	0.33	214.69	5364.81	0.91	158.51	5403.89	-0.29	34.33	5453.15	-0.30
Mar-25	161.87	5366.60	0.20	143.73	5414.09	-0.06	215.95	5362.05	0.10	226.02	5365.52	0.06	213.35	5366.15	1.34	158.96	5403.44	-0.45	34.47	5453.01	-0.14
Apr-25	161.82	5366.65	0.05	143.69	5414.13	0.04	215.94	5362.06	0.01	226.05	5365.49	-0.03	213.77	5365.73	-0.42	159.03	5403.37	-0.07	34.71	5452.77	-0.24
May-25	161.64	5366.83	0.18	143.78	5414.04	-0.09	215.68	5362.32	0.26	226.02	5365.52	0.03	214.66	5364.84	-0.89	159.44	5402.96	-0.41	34.92	5452.56	-0.21
Jun-25	161.71	5366.76	-0.07	143.65	5414.17	0.13	215.47	5362.53	0.21	225.95	5365.59	0.07	214.55	5364.95	0.11	159.33	5403.07	0.11	34.84	5452.64	0.08
Jul-25	161.62	5366.85	0.09	143.69	5414.13	-0.04	215.69	5362.31	-0.22	226.04	5365.50	-0.09	214.67	5364.83	-0.12	159.59	5402.81	-0.26	34.81	5452.67	0.03
Aug-25	161.78	5366.69	-0.16	143.81	5414.01	-0.12	216.09	5361.91	-0.40	226.16	5365.38	-0.12	214.78	5364.72	-0.11	159.62	5402.78	-0.03	34.56	5452.92	0.25
Sep-25	161.48	5366.99	0.30	143.66	5414.16	0.15	216.01	5361.99	0.08	226.05	5365.49	0.11	214.61	5364.89	0.17	159.55	5402.85	0.07	34.28	5453.20	0.28
Oct-25	161.47	5367.00	0.01	143.75	5414.07	-0.09	215.26	5362.74	0.75	226.20	5365.34	-0.15	214.68	5364.82	-0.07	159.72	5402.68	-0.17	34.20	5453.28	0.08
Nov-25	162.25	5366.22	-0.78	143.93	5413.89	-0.18	216.03	5361.97	-0.77	226.23	5365.31	-0.03	214.83	5364.67	-0.15	159.76	5402.64	-0.04	34.26	5453.22	-0.06
Dec-25	161.18	5367.29	1.07	143.52	5414.30	0.41	215.52	5362.48	0.51	225.89	5365.65	0.34	214.54	5364.96	0.29	159.57	5402.83	0.19	34.32	5453.16	-0.06
Yearly Change			0.94			0.05			0.45			0.28			0.54			-1.46			-0.39
Jan-26	161.29	5367.18	-0.11	143.79	5414.03	-0.27	215.62	5362.38	-0.10	226.17	5365.37	-0.28	214.78	5364.72	-0.24	160.00	5402.40	-0.43	34.59	5452.89	-0.27
Feb-26	160.64	5367.83	0.65	143.35	5414.47	0.44	215.03	5362.97	0.59	225.52	5366.02	0.65	214.17	5365.33	0.61	159.58	5402.82	0.42	34.71	5452.77	-0.12
Mar-26	160.10	5368.37	0.54	143.56	5414.26	-0.21	214.70	5363.30	0.33	225.44	5366.10	0.08	213.95	5365.55	0.22	159.98	5402.42	-0.40	34.95	5452.53	-0.24
Apr-26																					
May-26																					
Jun-26																					
Jul-26																					
Aug-26																					
Sep-26																					
Oct-26																					
Nov-26																					
Dec-26																					
Yearly Change			1.08			-0.04			0.82			0.45			0.59			-0.41			-0.63

SWL - Static water-level, in feet, below ground surface  
 ELEV - Water-level elevation, in feet USGS Datum)  
 NA - No water-level available due to access problems or obstructions  
 East Camp-Bdr-Sites-SWL-2021-26

Montana Bureau of Mines and Geology

Bedrock Water-Level Elevations

East Camp Mines and Bedrock Wells

Site Name/Monthly Elevations

DATE MO/YR (MP Elev)	WELL G SWL (FT)	ELEV (FT)	MO. DIFF (FT)	WELL H SWL (FT)	ELEV (FT)	MO. DIFF (FT)	WELL J SWL (FT)	ELEV (FT)	MO. DIFF (FT)	LEXINGTON SWL (FT)	ELEV (FT)	MO. DIFF (FT)	LEX-#1 SWL (FT)	ELEV (FT)	MO. DIFF (FT)	PILOT BUTTE SWL (FT)	ELEV (FT)	MO. DIFF (FT)	BELMONT 1 SWL (FT)	ELEV (FT)	MO. DIFF (FT)
		5537.56			5572.82		5530.03	5530.99			6216.59			6279.49			6056.98			5600.82	
Jan-24	165.46	5372.10	-0.42	Plugged&abandoned			172.42	5358.57	0.05	839.82	5376.77	0.02				675.91	5381.07	-0.02	135.09	5465.73	-7.47
Feb-24	165.27	5372.29	0.19	Plugged&abandoned			172.40	5358.59	0.02	839.51	5377.08	0.31				675.68	5381.30	0.23	135.70	5465.12	-0.61
Mar-24	164.72	5372.84	0.55	Plugged&abandoned			172.62	5358.37	-0.22	839.65	5376.94	-0.14				675.77	5381.21	-0.09	135.94	5464.88	-0.24
May-24	165.25	5372.31	-0.53	Plugged&abandoned			172.80	5358.19	-0.18	839.80	5376.79	-0.15				675.89	5381.09	-0.12	135.93	5464.89	0.01
May-24	165.50	5372.06	-0.25	Plugged&abandoned			172.91	5358.08	-0.11	NR						675.83	5381.15	0.06	136.58	5464.24	-0.65
Jun-24	166.52	5371.04	-1.02	Plugged&abandoned			172.68	5358.31	0.23	NR						675.87	5381.11	-0.04	136.55	5464.27	0.03
Jul-24	165.75	5371.81	0.77	Plugged&abandoned			172.91	5358.08	-0.23	NR						676.31	5380.67	-0.44	136.32	5464.50	0.23
Aug-24	165.96	5371.60	-0.21	Plugged&abandoned			173.24	5357.75	-0.33	NR						676.58	5380.40	-0.27	125.90	5474.92	10.42
Sep-24	166.73	5370.83	-0.77	Plugged&abandoned			173.65	5357.34	-0.41	NR						676.95	5380.03	-0.37	125.43	5475.39	0.47
Oct-24	166.69	5370.87	0.04	Plugged&abandoned			173.87	5357.12	-0.22	NR						677.21	5379.77	-0.26	130.99	5469.83	-5.56
Nov-24	166.68	5370.88	0.01	Plugged&abandoned			173.81	5357.18	0.06	NR						677.21	5379.77	0.00	135.58	5465.24	-4.59
Dec-24	166.54	5371.02	0.14	Plugged&abandoned			173.77	5357.22	0.04	NR						677.21	5379.77	0.00	140.29	5460.53	-4.71
Yearly Change			-1.50						-1.30				0.04					-1.32			-12.67
Jan-25	166.14	5371.42	0.40	Plugged&abandoned			173.76	5357.23	0.01	NR						677.24	5379.74	-0.03	139.26	5461.56	1.03
Feb-25	166.66	5370.90	-0.52	Plugged&abandoned			173.72	5357.27	0.04	NR						677.42	5379.56	-0.18	140.15	5460.67	-0.89
Mar-25	166.48	5371.08	0.18	Plugged&abandoned			173.58	5357.41	0.14	NR						677.28	5379.70	0.14	141.03	5459.79	-0.88
Apr-25	166.99	5370.57	-0.51	Plugged&abandoned			173.47	5357.52	0.11	NR						677.39	5379.59	-0.11	142.23	5458.59	-1.20
May-25	166.48	5371.08	0.51	Plugged&abandoned			173.29	5357.70	0.18	NR						677.31	5379.67	0.08	142.68	5458.14	-0.45
Jun-25	166.32	5371.24	0.16	Plugged&abandoned			172.98	5358.01	0.31	NR						677.21	5379.77	0.10	142.68	5458.14	0.00
Jul-25	166.38	5371.18	-0.06	Plugged&abandoned			173.22	5357.77	-0.24	NR						677.14	5379.84	0.07	143.73	5457.09	-1.05
Aug-25	166.72	5370.84	-0.34	Plugged&abandoned			173.25	5357.74	-0.03	NR						677.32	5379.66	-0.18	136.03	5464.79	7.70
Sep-25	166.77	5370.79	-0.05	Plugged&abandoned			173.04	5357.95	0.21	NR						677.33	5379.65	-0.01	130.63	5470.19	5.40
Oct-25	166.61	5370.95	0.16	Plugged&abandoned			173.03	5357.96	0.01	NR						677.23	5379.75	0.10	131.11	5469.71	-0.48
Nov-25	166.66	5370.90	-0.05	Plugged&abandoned			173.04	5357.95	-0.01	NR						NA			134.77	5466.05	-3.66
Dec-25	166.29	5371.27	0.37	Plugged&abandoned			172.64	5358.35	0.40	NR						676.79	5380.19	0.44	137.46	5463.36	-2.69
Yearly Change			0.25						1.13				0.00					0.42			2.83
Jan-26	166.32	5371.24	-0.03	Plugged&abandoned			172.62	5358.37	0.02	NR						676.73	5380.25	0.06	143.32	5457.50	-5.86
Feb-26	165.85	5371.71	0.47	Plugged&abandoned			171.66	5359.33	0.96	NR			901.55	5377.94		676.20	5380.78	0.53	146.55	5454.27	-3.23
Mar-26	165.73	5371.83	0.12	Plugged&abandoned			171.21	5359.78	0.45	NR			901.07	5378.42	0.48	676.16	5380.82	0.04	151.55	5449.27	-5.00
Apr-26																					
May-26																					
Jun-26																					
Jul-26																					
Aug-26																					
Sep-26																					
Oct-26																					
Nov-26																					
Dec-26																					
Yearly Change			0.56						1.43				0.00			0.48		0.63			-14.09

SWL - Static water-level, in feet, below ground surface  
 ELEV - Water-level elevation, in feet USGS Datum)  
 NA - No water-level available due to access problems or obstructions  
 East Camp-Bdr-Sites-SWL-2021-26

Montana Bureau of Mines and Geology

Bedrock Water-Level Elevations

East Camp Mines and Bedrock Wells

Site Name/Monthly Elevations

DATE MO/YR (MP Elev)	BELMONT 2 SWL (FT)	ELEV (FT)	MO. DIFF (FT)
		5602.72	
Jan-24	235.40	5367.32	-0.05
Feb-24	235.36	5367.36	0.04
Mar-24	235.56	5367.16	-0.20
May-24	235.73	5366.99	-0.17
May-24	235.85	5366.87	-0.12
Jun-24	235.63	5367.09	0.22
Jul-24	236.05	5366.67	-0.42
Aug-24	236.26	5366.46	-0.21
Sep-24	236.51	5366.21	-0.25
Oct-24	236.82	5365.90	-0.31
Nov-24	236.92	5365.80	-0.10
Dec-24	236.98	5365.74	-0.06
Yearly Change			-1.63
Jan-25	237.02	5365.70	-0.04
Feb-25	237.11	5365.61	-0.09
Mar-25	237.04	5365.68	0.07
Apr-25	237.05	5365.67	-0.01
May-25	236.61	5366.11	0.44
Jun-25	236.60	5366.12	0.01
Jul-25	236.78	5365.94	-0.18
Aug-25	236.71	5366.01	0.07
Sep-25	236.19	5366.53	0.52
Oct-25	234.22	5368.50	1.97
Nov-25	236.18	5366.54	-1.96
Dec-25	235.83	5366.89	0.35
Yearly Change			1.15
Jan-26	235.98	5366.74	-0.15
Feb-26	235.31	5367.41	0.67
Mar-26	234.51	5368.21	0.80
Apr-26			
May-26			
Jun-26			
Jul-26			
Aug-26			
Sep-26			
Oct-26			
Nov-26			
Dec-26			
Yearly Change			1.32

SWL - Static water-level, in feet, below ground surface  
 ELEV - Water-level elevation, in feet USGS Datum)  
 NA - No water-level available due to access problems or obstructions  
 East Camp-Bdr-Sites-SWL-2021-26

**Montana Bureau of Mines and Geology  
Butte Mine Flooding Monitoring**

GWIC ID	Agency	Date (mm/dd/yy)	4647 Parrot Park Well			157638 Belmont Well #1			4644 Hebgen Park Well		
			SWL(ft) (mp=ct)	Elev(ft) 5520.66	Diff (ft)**	SWL(ft) (mp=ct)	Elev(ft) 5600.82	Diff (ft)**	SWL(ft) (mp=ct)	Elev(ft) 5516.15	Diff (ft)**
MBMG		01/29/24	114.11	5406.55	-0.74	135.09	5465.73	-7.47	22.17	5493.98	-0.68
MBMG		02/27/24	114.69	5405.97	-0.58	135.70	5465.12	-0.61	22.51	5493.64	-0.34
MBMG		03/28/24	115.36	5405.30	-0.67	135.94	5464.88	-0.24	22.93	5493.22	-0.42
MBMG		04/29/24	115.87	5404.79	-0.51	135.93	5464.89	0.01	22.84	5493.31	0.09
MBMG		05/26/24	116.38	5404.28	-0.51	136.58	5464.24	-0.65	22.96	5493.19	-0.12
MBMG		06/26/24	116.85	5403.81	-0.47	136.55	5464.27	0.03	22.66	5493.49	0.30
MBMG		07/29/24	117.21	5403.45	-0.36	132.33	5468.49	4.22	22.51	5493.64	0.15
MBMG		08/26/24	116.31	5404.35	0.90	125.90	5474.92	6.43	22.84	5493.31	-0.33
MBMG		09/25/24	114.10	5406.56	2.21	125.43	5475.39	0.47	23.20	5492.95	-0.36
MBMG		10/28/24	115.17	5405.49	-1.07	130.99	5469.83	-5.56	23.49	5492.66	-0.29
MBMG		11/25/24	115.13	5405.53	0.04	135.58	5465.24	-4.59	24.41	5491.74	-0.92
MBMG		12/30/24	115.65	5405.01	-0.52	140.29	5460.53	-4.71	25.46	5490.69	-1.05
MBMG		01/27/25	116.48	5404.18	-0.83	139.26	5461.56	1.03	28.17	5487.98	-2.71
MBMG		02/24/25	117.14	5403.52	-0.66	140.15	5460.67	-0.89	27.08	5489.07	1.09
MBMG		03/28/25	117.81	5402.85	-0.67	141.03	5459.79	-0.88	27.72	5488.43	-0.64
MBMG		04/28/25	118.53	5402.13	-0.72	142.23	5458.59	-1.20	28.27	5487.88	-0.55
MBMG		05/27/25	119.20	5401.46	-0.67	142.68	5458.14	-0.45	28.46	5487.69	-0.19
MBMG		06/27/25	119.54	5401.12	-0.34	142.68	5458.14	0.00	27.92	5488.23	0.54
MBMG		07/29/25	118.64	5402.02	0.90	143.73	5457.09	-1.05	27.77	5488.38	0.15
MBMG		08/26/25	117.79	5402.87	0.85	136.03	5464.79	7.70	27.14	5489.01	0.63
MBMG		09/25/25	114.17	5406.49	3.62	130.63	5470.19	5.40	26.86	5489.29	0.28
MBMG		10/29/25	111.58	5409.08	2.59	131.11	5469.71	-0.48	26.76	5489.39	0.10
MBMG		11/24/25	111.61	5409.05	-0.03	134.77	5466.05	-3.66	26.91	5489.24	-0.15
MBMG		12/24/25	112.61	5408.05	-1.00	137.46	5463.36	-2.69	27.09	5489.06	-0.18
MBMG		01/27/26	114.35	5406.31	-1.74	143.32	5457.50	-5.86	27.59	5488.56	-0.50
MBMG		02/23/26	115.21	5405.45	-0.86	146.55	5454.27	-3.23	27.98	5488.17	-0.39
MBMG		03/26/26	115.18	5405.48	0.03	151.55	5449.27	-5.00	28.66	5487.49	-0.68
TOTAL CHANGE ==>			FROM 11/94==>			5.33	FROM 8/96 ==>			-62.63	-7.24

**Montana Bureau of Mines and Geology**  
**Butte Mine Flooding**  
**West Camp Water-Levels**

SITE NAME/MONTHLY ELEVATIONS															
DATE	TRAVONA	ELEV	MO. DIFF	EMMA	ELEV	MO. DIFF	OPHIR	ELEV	MO. DIFF	WELL 21	ELEV	MO. DIFF	CHESTER STEELE	ELEV	MO. DIFF
MO/YR	SWL (FT)	(FT)	(FT)	SWL (FT)	(FT)	(FT)	SWL (FT)	(FT)	(FT)	SWL (FT)	(FT)	(FT)	SWL (FT)	(FT)	(FT)
(MP Elev)		5590.60	5591.98		5636.80			5530.29	5533.16		5471.50			5629.57	
01/24/22	169.21	5422.77	0.02	214.83	5421.97	0.10	110.53	5422.63	-0.02				51.28	5578.29	-2.81
02/22/22	169.39	5422.59	-0.18	215.05	5421.75	-0.22	110.80	5422.36	-0.27				54.11	5575.46	-2.83
03/29/22	172.14	5419.84	-2.75	217.50	5419.30	-2.45	113.21	5419.95	-2.41				57.35	5572.22	-3.24
04/25/22	172.31	5419.67	-0.17	217.93	5418.87	-0.43	113.67	5419.49	-0.46				59.93	5569.64	-2.58
05/25/22	171.88	5420.10	0.43	217.48	5419.32	0.45	113.30	5419.86	0.37				46.69	5582.88	13.24
06/27/22	171.82	5420.16	0.06	217.47	5419.33	0.01	113.33	5419.83	-0.03				43.47	5586.10	3.22
07/26/22	171.79	5420.19	0.03	217.44	5419.36	0.03	113.25	5419.91	0.08				44.37	5585.20	-0.90
08/30/22	171.81	5420.17	-0.02	217.46	5419.34	-0.02	113.26	5419.90	-0.01				43.85	5585.72	0.52
09/29/22	171.77	5420.21	0.04	217.40	5419.40	0.06	113.15	5420.01	0.11				43.71	5585.86	0.14
10/27/22	171.73	5420.25	0.04	217.21	5419.59	0.19	113.26	5419.90	-0.11				43.28	5586.29	0.43
11/28/22	168.00	5423.98	3.73	214.35	5422.45	2.86	109.37	5423.79	3.89				45.51	5584.06	-2.23
12/29/22	168.10	5423.88	-0.10	213.67	5423.13	0.68	109.31	5423.85	0.06				48.74	5580.83	-3.23
Yearly Change			1.13			1.26			1.20			0.00			-0.27
01/26/23	168.67	5423.31	-0.57	214.30	5422.50	-0.63	109.86	5423.30	-0.55				51.58	5577.99	-2.84
02/27/23	170.31	5421.67	-1.64	216.05	5420.75	-1.75	111.55	5421.61	-1.69				54.29	5575.28	-2.71
03/29/23	171.91	5420.07	-1.60	216.57	5420.23	-0.52	113.14	5420.02	-1.59				57.29	5572.28	-3.00
04/24/23	171.74	5420.24	0.17	216.40	5420.40	0.17	113.00	5420.16	0.14				57.89	5571.68	-0.60
05/25/23	171.94	5420.04	-0.20	216.56	5420.24	-0.16	113.18	5419.98	-0.18				42.09	5587.48	15.80
06/27/23	165.76	5426.22	6.18	210.37	5426.43	6.19	107.07	5426.09	6.11				37.61	5591.96	4.48
07/26/23	168.29	5423.69	-2.53	212.86	5423.94	-2.49	109.19	5423.97	-2.12				38.33	5591.24	-0.72
08/30/23	169.95	5422.03	-1.66	214.58	5422.22	-1.72	111.07	5422.09	-1.88				32.39	5597.18	5.94
09/27/23	170.15	5421.83	-0.20	215.69	5421.11	-1.11	111.14	5422.02	-0.07				32.96	5596.61	-0.57
10/27/23	166.76	5425.22	3.39	212.40	5424.40	3.29	107.91	5425.25	3.23				34.30	5595.27	-1.34
11/28/23	168.76	5423.22	-2.00	214.34	5422.46	-1.94	109.74	5423.42	-1.83				36.86	5592.71	-2.56
12/29/23	170.73	5421.25	-1.97	216.35	5420.45	-2.01	111.61	5421.55	-1.87				39.49	5590.08	-2.63
Yearly Change			-2.63			-2.68			-2.30			0.00			9.25
01/29/24	170.84	5421.14	-0.11	216.44	5420.36	-0.09	111.85	5421.31	-0.24				43.52	5586.05	-4.03
02/27/24	170.76	5421.22	0.08	216.35	5420.45	0.09	111.86	5421.30	-0.01				44.87	5584.70	-1.35
03/29/24	170.84	5421.14	-0.08	216.42	5420.38	-0.07	111.90	5421.26	-0.04				47.04	5582.53	-2.17
04/29/24	170.76	5421.22	0.08	216.36	5420.44	0.06	111.91	5421.25	-0.01				48.03	5581.54	-0.99
05/28/24	170.81	5421.17	-0.05	216.40	5420.40	-0.04	111.96	5421.20	-0.05				48.97	5580.60	-0.94
06/27/24	170.81	5421.17	0.00	216.41	5420.39	-0.01	111.97	5421.19	-0.01				48.10	5581.47	0.87
07/26/24	170.71	5421.27	0.10	216.26	5420.54	0.15	111.81	5421.35	0.16				32.42	5597.15	15.68
08/30/24	170.55	5421.43	0.16	216.15	5420.65	0.11	111.65	5421.51	0.16				32.11	5597.46	0.31
09/26/24	171.00	5420.98	-0.45	216.56	5420.24	-0.41	112.02	5421.14	-0.37				36.49	5593.08	-4.38
10/27/24	170.94	5421.04	0.06	216.54	5420.26	0.02	111.96	5421.20	0.06				39.97	5589.60	-3.48
10/27/24	170.94	5421.04	0.06	216.54	5420.26	0.02	111.96	5421.20	0.06				39.97	5589.60	-3.48
11/26/24	170.89	5421.09	0.05	216.51	5420.29	0.03	111.95	5421.21	0.01				42.20	5587.37	-2.23
12/24/24	170.79	5421.19	0.10	216.52	5420.28	-0.01	111.89	5421.27	0.06				44.08	5585.49	-1.88
Yearly Change			0.00			-0.15			-0.22			0.00			-8.07
01/28/25	170.96	5421.02	-0.17	216.56	5420.24	-0.04	112.01	5421.15	-0.12				47.00	5582.57	-2.92
02/27/25	170.91	5421.07	0.05	216.61	5420.19	-0.05	112.03	5421.13	-0.02				49.39	5580.18	-2.39
03/29/25	170.87	5421.11	0.04	216.50	5420.30	0.11	112.05	5421.11	-0.02				51.09	5578.48	-1.70
04/29/25	170.85	5421.13	0.02	216.44	5420.36	0.06	112.03	5421.13	0.02				52.53	5577.04	-1.44
05/28/25	170.84	5421.14	0.01	216.44	5420.36	0.00	111.99	5421.17	0.04				39.60	5589.97	12.93
06/27/25	170.74	5421.24	0.10	216.31	5420.49	0.13	111.88	5421.28	0.11				40.94	5588.63	-1.34
07/26/25	170.98	5421.00	-0.24	216.67	5420.13	-0.36	112.19	5420.97	-0.31				41.07	5588.50	-0.13
08/30/25	170.69	5421.29	0.29	216.25	5420.55	0.42	111.86	5421.30	0.33				37.97	5591.60	3.10
09/24/25	170.58	5421.40	0.11	216.16	5420.64	0.09	111.76	5421.40	0.10				39.47	5590.10	-1.50
10/27/25	170.55	5421.43	0.03	216.15	5420.65	0.01	111.74	5421.42	0.02				40.41	5589.16	-0.94
11/26/25	170.68	5421.30	-0.13	216.38	5420.42	-0.23	111.81	5421.35	-0.07				41.33	5588.24	-0.92
12/24/25	170.84	5421.14	-0.16	216.45	5420.35	-0.07	111.95	5421.21	-0.14				42.67	5586.90	-1.34
Yearly Change			-0.05			0.07			-0.06			0.00			1.41
01/28/26	170.91	5421.07	-0.07	216.54	5420.26	-0.09	112.07	5421.09	-0.12				44.84	5584.73	-2.17
02/23/26	170.78	5421.20	0.13	216.43	5420.37	0.11	111.98	5421.18	0.09				46.48	5583.09	-1.64
03/25/26	170.84	5421.14	-0.06	216.46	5420.34	-0.03	112.01	5421.15	-0.03				48.56	5581.01	-2.08
04/26/26															
05/26/26															
06/26/26															
07/26/26															
08/26/26															
09/26/26															
10/26/26															
11/26/26															
12/26/26															
Yearly Change			0.00			-0.01			-0.06			0.00			-5.89

SWL - STATIC WATER LEVEL, IN FEET, BELOW GROUND SURFACE(MP)  
ELEV - WATER LEVEL ELEVATION, IN FEET, ABOVE MEAN SEA LEVEL (USGS DATUM)  
NA - NO WATER LEVELS AVAILABLE DUE TO ACCESS PROBLEMS OR OBSTRUCTIONS  
**Ophir Mine Elevation changed April 2005 after casing repair.**

**Montana Bureau of Mines and Geology  
Butte Mine Flooding  
West Camp Water-Levels**

GWIC ID	Date	Date/Time	AMC-21 4993			BMF96-1D 158224			BMF96-1S 158225			BMF96-2 158226			BMF96-3 158231			BMF96-4 164443				
			SWL (ft)	Elev. (ft) 5471.50	Change (ft)	SWL (gs) (ft)	Elev. (ft) 5471.12	Change (ft) 5471.59	SWL (gs) (ft)	Elev. (ft) 5470.16	Change (ft)	SWL (gs) (ft)	Elev. (ft) 5473.05	Change (ft)	SWL (gs) (ft)	Elev. (ft) 5467.27	Change (ft)	SWL (gs) (ft)	Elev. (ft) 5490.93	Change (ft) 5491.30	SWL (gs) (ft)	Elev. (ft) 5489.20
	01/26/21	Plugged	Plugged		50.23	5421.36	0.00	22.93	5447.23	-0.82	15.57	5457.48	-0.31	10.04	5457.23	-0.26	49.93	5439.27	-0.19			
	02/25/21	Plugged	Plugged		50.26	5421.33	-0.03	23.53	5446.63	-0.60	15.77	5457.28	-0.20	10.23	5457.04	-0.19	50.25	5438.95	-0.32			
	03/30/21	Plugged	Plugged		50.21	5421.38	0.05	22.37	5447.79	1.16	14.71	5458.34	1.06	10.10	5457.17	0.13	51.02	5438.18	-0.77			
	05/03/21	Plugged	Plugged		50.23	5421.36	-0.02	22.49	5447.67	-0.12	14.83	5458.22	-0.12	9.93	5457.34	0.17	51.11	5438.09	-0.09			
	05/26/21	Plugged	Plugged		50.23	5421.36	0.00	23.06	5447.10	-0.57	14.85	5458.20	-0.02	9.82	5457.45	0.11	51.31	5437.89	-0.20			
	06/25/21	Plugged	Plugged		50.05	5421.54	0.18	22.51	5447.65	0.55	15.15	5457.90	-0.30	9.64	5457.63	0.18	51.42	5437.78	-0.11			
	07/27/21	Plugged	Plugged		50.02	5421.57	0.03	22.62	5447.54	-0.11	15.73	5457.32	-0.58	9.47	5457.80	0.17	51.21	5437.99	0.21			
	08/30/21	Plugged	Plugged		49.97	5421.62	0.05	20.56	5449.60	2.06	15.53	5457.52	0.20	9.01	5458.26	0.46	50.53	5438.67	0.68			
	10/01/21	Plugged	Plugged		49.96	5421.63	0.01	21.03	5449.13	-0.47	15.88	5457.17	-0.35	9.47	5457.80	-0.46	50.35	5438.85	0.18			
	10/29/21	Plugged	Plugged		50.19	5421.40	-0.23	21.86	5448.30	-0.83	16.00	5457.05	-0.12	9.83	5457.44	-0.36	50.12	5439.08	0.23			
	11/30/21	Plugged	Plugged		50.23	5421.36	-0.04	22.64	5447.52	-0.78	16.15	5456.90	-0.15	10.27	5457.00	-0.44	50.36	5438.84	-0.24			
	12/29/21	Plugged	Plugged		49.65	5421.94	0.58	23.27	5446.89	-0.63	16.32	5456.73	-0.17	10.52	5456.75	-0.25	50.58	5438.62	-0.22			
	01/26/22	Plugged	Plugged		49.61	5421.98	0.04	23.89	5446.27	-0.62	16.56	5456.49	-0.24	10.71	5456.56	-0.19	50.88	5438.32	-0.30			
	02/22/22	Plugged	Plugged		49.71	5421.88	-0.10	24.18	5445.98	-0.29	16.32	5456.73	0.24	10.66	5456.61	0.05	51.23	5437.97	-0.35			
	03/28/22	Plugged	Plugged		52.78	5418.81	-3.07	23.97	5446.19	0.21	15.97	5457.08	0.35	10.59	5456.68	0.07	51.78	5437.42	-0.55			
	04/25/22	Plugged	Plugged		52.68	5418.91	0.10	24.49	5445.67	-0.52	16.07	5456.98	-0.10	10.82	5456.45	-0.23	52.75	5436.45	-0.97			
	05/25/22	Plugged	Plugged		52.24	5419.35	0.44	24.50	5445.66	-0.01	16.08	5456.97	-0.01	10.67	5456.60	0.15	53.07	5436.13	-0.32			
	06/27/22	Plugged	Plugged		52.67	5418.92	-0.43	21.60	5448.56	2.90	15.14	5457.91	0.94	9.59	5457.68	1.08	53.34	5435.86	-0.27			
	07/26/22	Plugged	Plugged		52.67	5418.92	0.00	20.91	5449.25	0.69	15.39	5457.66	-0.25	9.27	5458.00	0.32	53.14	5436.06	0.20			
	08/25/22	Plugged	Plugged		52.69	5418.90	-0.02	21.58	5448.58	-0.67	15.88	5457.17	-0.49	9.35	5457.92	-0.08	52.81	5436.39	0.33			
	09/29/22	Plugged	Plugged		52.62	5418.97	0.07	21.91	5448.25	-0.33	16.07	5456.98	-0.19	9.28	5457.99	0.07	52.15	5437.05	0.66			
	10/26/22	Plugged	Plugged		52.59	5419.00	0.03	21.25	5448.91	0.66	16.00	5457.05	0.07	9.29	5457.98	-0.01	51.83	5437.37	0.32			
	11/28/22	Plugged	Plugged		48.82	5422.77	3.77	22.14	5448.02	-0.89	16.23	5456.82	-0.23	10.03	5457.24	-0.74	50.81	5438.39	1.02			
	12/29/22	Plugged	Plugged		48.90	5422.69	-0.08	23.04	5447.12	-0.90	16.62	5456.43	-0.39	10.39	5456.88	-0.36	50.45	5438.75	0.36			
	01/26/23	Plugged	Plugged		49.49	5422.10	-0.59	23.59	5446.57	-0.55	16.81	5456.24	-0.19	10.69	5456.58	-0.30	50.77	5438.43	-0.32			
	02/27/23	Plugged	Plugged		51.20	5420.39	-1.71	24.31	5445.85	-0.72	16.99	5456.06	-0.18	10.93	5456.34	-0.24	51.18	5438.02	-0.41			
	03/28/23	Plugged	Plugged		52.71	5418.88	-1.51	24.71	5445.45	-0.40	16.56	5456.49	0.43	10.25	5457.02	0.68	52.24	5436.96	-1.06			
	04/24/23	Plugged	Plugged		52.13	5419.46	0.58	22.64	5447.52	2.07	14.44	5458.61	2.12	9.86	5457.41	0.39	52.20	5437.00	0.04			
	05/28/23	Plugged	Plugged		52.78	5418.81	-0.65	20.51	5449.65	2.13	14.36	5458.69	0.08	9.31	5457.96	0.55	52.61	5436.59	-0.41			
	06/28/23	Plugged	Plugged		46.60	5424.99	6.18	16.11	5454.05	4.40	12.75	5460.30	1.61	7.89	5459.38	1.42	50.91	5438.29	1.70			
	07/28/23	Plugged	Plugged		48.67	5422.92	-2.07	15.90	5454.26	0.21	13.53	5459.52	-0.78	8.22	5459.05	-0.33	49.94	5439.26	0.97			
	08/28/23	Plugged	Plugged		50.82	5420.77	-2.15	16.10	5454.06	-0.20	13.41	5459.64	0.12	7.63	5459.64	0.59	49.65	5439.55	0.29			
	09/27/23	Plugged	Plugged		51.01	5420.58	-0.19	16.05	5454.11	0.05	13.25	5459.80	0.16	7.98	5459.29	-0.35	48.78	5440.42	0.87			
	10/25/23	Plugged	Plugged		47.68	5423.91	3.33	16.84	5453.32	-0.79	13.34	5459.71	-0.09	8.47	5458.80	-0.49	47.33	5441.87	1.45			
	11/28/23	Plugged	Plugged		49.59	5422.00	-1.91	16.81	5453.35	0.03	13.46	5459.59	-0.12	8.75	5458.52	-0.28	47.11	5442.09	0.22			
	12/28/23	Plugged	Plugged		51.07	5420.52	-1.48	17.26	5452.90	-0.45	13.88	5459.17	-0.42	9.02	5458.25	-0.27	47.75	5441.45	-0.64			
	01/29/24	Plugged	Plugged		51.70	5419.89	-0.63	17.85	5452.31	-0.59	14.26	5458.79	-0.38	9.26	5458.01	-0.24	47.69	5441.51	0.06			
	02/27/24	Plugged	Plugged		51.12	5420.47	0.58	17.66	5452.50	0.19	13.75	5459.30	0.51	9.08	5458.19	0.18	48.85	5440.35	-1.16			
	03/29/24	Plugged	Plugged		51.17	5420.42	-0.05	15.74	5454.42	1.92	12.95	5460.10	0.80	9.01	5458.26	0.07	49.45	5439.75	-0.60			
	04/29/24	Plugged	Plugged		51.61	5419.98	-0.44	15.13	5455.03	0.61	13.34	5459.71	-0.39	8.75	5458.52	0.26	49.52	5439.68	-0.07			
	05/29/24	Plugged	Plugged		51.19	5420.40	0.42	15.72	5454.44	-0.59	13.56	5459.49	-0.22	8.82	5458.45	-0.07	49.71	5439.49	-0.19			
	06/26/24	Plugged	Plugged		51.20	5420.39	-0.01	16.11	5454.05	-0.39	13.87	5459.18	-0.31	8.72	5458.55	0.10	49.54	5439.66	0.17			
	07/30/24	Plugged	Plugged		51.55	5420.04	-0.35	18.03	5452.13	-1.92	14.50	5458.55	-0.63	8.79	5458.48	-0.07	49.12	5440.08	0.42			
	08/29/24	Plugged	Plugged		51.45	5420.14	0.10	19.47	5450.69	-1.44	14.73	5458.32	-0.23	8.79	5458.48	0.00	49.04	5440.16	0.08			
	09/26/24	Plugged	Plugged		51.87	5419.72	-0.42	19.85	5450.31	-0.38	14.90	5458.15	-0.17	9.05	5458.22	-0.26	49.06	5440.14	-0.02			
	10/28/24	Plugged	Plugged		51.80	5419.79	0.07	20.35	5449.81	-0.50	15.06	5457.99	-0.16	9.49	5457.78	-0.44	48.85	5440.35	0.21			
	11/26/24	Plugged	Plugged		51.79	5419.80	0.01	21.11	5449.05	-0.76	15.24	5457.81	-0.18	9.74	5457.53	-0.25	NR					
	12/24/24	Plugged	Plugged		51.69	5419.90	0.10	21.58	5448.58	-0.47	15.52	5457.53	-0.28	9.92	5457.35	-0.18	NR					
	01/28/25	Plugged	Plugged		51.80	5419.79	-0.11	21.73	5448.43	-0.15	15.88	5457.17	-0.36	10.21	5457.06	-0.29	NR					
	02/27/25	Plugged	Plugged		51.80	5419.79	0.00	22.34	5447.82	-0.61	16.08	5456.97	-0.20	10.05	5457.22	0.16	NR					
	03/28/25	Plugged	Plugged		51.78	5419.81	0.02	20.45	5449.71	1.89	15.07	5457.98	1.01	10.10	5457.17	-0.05	NR					
	04/29/25	Plugged	Plugged		51.70	5419.89	0.08	18.71	5451.45	1.74	14.96	5458.09	0.11	9.99	5457.28	0.11	51.34	5437.86	-2.49			
	05/28/25	Plugged	Plugged		51.66	5419.93	0.04	18.36	5451.80	0.35	14.44	5458.61	0.52	9.31	5457.96	0.68	51.57	5437.63	-0.23			
	06/27/25	Plugged	Plugged		51.60	5419.99	0.06	19.13	5451.03	-0.77	14.80	5458.25	-0.36	9.23	5458.04	0.08	51.49	5437.71	0.08			
	07/29/25	Plugged	Plugged		51.86	5419.73	-0.26	20.26	5449.90	-1.13	15.26	5457.79	-0.46	9.21	5458.06	0.02	51.33	5437.87	0.16			
	08/26/25	Plugged	Plugged		51.54	5420.05	0.32	19.55	5450.61	0.71	14.99	5458.06	0.27	8.87	5458.40	0.34	51.03	5438.17	0.30			
	09/25/25	Plugged	Plugged		51.48	5420.11	0.06	19.78	5450.38	-0.23	15.16	5457.89	-0.17	8.92	5458.35	-0.05	50.56	5438.64	0.47			
	10/30/25	Plugged	Plugged		51.48	5420.11	0.00	19.61	5450.55													

**Montana Bureau of Mines and Geology  
Butte Mine Flooding  
West Camp Water-Levels**

GWIC ID	WCPW-1 184133		Chester Steele 4773			WC Extraction Well Data							
	Date	SWL (gs)	Elev. (ft) 5471.35	Change	SWL (gs) (ft)	Elev. (ft) 5629.57	Change (ft)	Reading	Diff (gallons)	Daily Avg. Pump Rate (gallons)	Pumpin g Rate (gpm)	Monthly Total Pumped (Gallons)	Monthly Total Pumped (Acre-Ft)
01/26/21	NA			46.43	5583.14	-2.79	NA	7,150,126	246,556	171	171	7,150,126	21.94
02/25/21	NA			49.47	5580.10	-3.04	NA	6,738,616	224,621	156	156	6,738,616	20.68
03/30/21	NA			51.75	5577.82	-2.28	NA	6,775,165	205,308	143	143	6,775,165	20.79
05/03/21	NA			53.92	5575.65	-2.17	NA	8,283,460	243,631	169	169	8,283,460	25.42
05/26/21	NA			55.69	5573.88	-1.77	NA	6,309,148	274,311	190	190	6,309,148	19.36
06/25/21	NA			43.27	5586.30	12.42	NA	7,866,722	262,224	182	182	7,866,722	24.14
07/27/21	NA			38.36	5591.21	4.91	NA	6,939,261	216,852	151	151	6,939,261	21.30
08/30/21	NA			37.89	5591.68	0.47	NA	9,651,763	283,875	197	197	9,651,763	29.62
10/01/21	NA			41.53	5588.04	-3.64	NA	7,819,062	244,346	170	170	7,819,062	24.00
10/29/21	NA			43.43	5586.14	-1.90	NA	7,541,316	269,333	187	187	7,541,316	23.14
11/30/21	NA			45.67	5583.90	-2.24	NA	8,761,266	273,790	190	190	8,761,266	26.89
12/29/21	NA			48.47	5581.10	-2.80	NA	6,669,610	229,987	160	160	6,669,610	20.47
01/26/22	NA			51.28	5578.29	-2.81	NA	6,587,706	235,275	163	163	6,587,706	20.22
02/22/22	NA			54.11	5575.46	-2.83	NA	6,529,127	241,820	168	168	6,529,127	20.04
03/28/22	NA			57.35	5572.22	-3.24	NA	8,421,985	247,705	172	172	8,421,985	25.85
04/25/22	NA			59.93	5569.64	-2.58	NA	6,048,967	216,035	150	150	6,048,967	18.56
05/25/22	NA			46.69	5582.88	13.24	NA	5,624,388	187,480	130	130	5,624,388	17.26
06/27/22	NA			43.47	5586.10	3.22	NA	7,133,329	216,161	150	150	7,133,329	21.89
07/26/22	NA			44.37	5585.20	-0.90	NA	6,174,725	212,922	148	148	6,174,725	18.95
08/25/22	NA			43.85	5585.72	0.52	NA	8,343,055	278,102	193	193	8,343,055	25.60
09/29/22	NA			43.71	5585.86	0.14	NA	7,351,985	210,057	146	146	7,351,985	22.56
10/26/22	NA			43.28	5586.29	0.43	NA	7,655,033	283,520	197	197	7,655,033	23.49
11/28/22	NA			45.51	5584.06	-2.23	NA	7,842,844	237,662	165	165	7,842,844	24.07
12/29/22	NA			48.74	5580.83	-3.23	NA	6,630,305	213,881	149	149	6,630,305	20.35
01/26/23	NA			51.58	5577.99	-2.84	NA	6,688,093	238,860	166	166	6,688,093	20.52
02/27/23	NA			54.29	5575.28	-2.71	NA	8,349,800	260,931	181	181	8,349,800	25.62
03/28/23	NA			57.29	5572.28	-3.00	NA	6,484,019	223,587	155	155	6,484,019	19.90
04/24/23	NA			57.89	5571.68	-0.60	NA	5,932,475	219,721	153	153	5,932,475	18.21
05/28/23	NA			42.09	5587.48	15.80	NA	6,281,716	184,756	128	128	6,281,716	19.28
06/28/23	NA			37.61	5591.96	4.48	NA	6,279,918	202,578	141	141	6,279,918	19.27
07/28/23	NA			38.33	5591.24	-0.72	NA	7,983,883	266,129	185	185	7,983,883	24.50
08/28/23	NA			32.39	5597.18	5.94	NA	12,014,515	387,565	269	269	12,014,515	36.87
09/27/23	NA			32.96	5596.61	-0.57	NA	10,599,761	353,325	245	245	10,599,761	32.53
10/25/23	NA			34.30	5595.27	-1.34	NA	9,098,877	324,960	226	226	9,098,877	27.92
11/28/23	NA			36.86	5592.71	-2.56	NA	12,170,779	357,964	249	249	12,170,779	37.35
12/28/23	NA			39.49	5590.08	-2.63	NA	9,621,840	320,728	223	223	9,621,840	29.53
01/29/24	NA			43.52	5586.05	-4.03	NA	10,765,157	336,411	234	234	10,765,157	33.04
02/27/24	NA			44.87	5584.70	-1.35	NA	7,873,618	271,504	189	189	7,873,618	24.16
03/29/24	NA			47.04	5582.53	-2.17	NA	7,616,532	245,695	171	171	7,616,532	23.37
04/29/24	NA			48.03	5581.54	-0.99	NA	7,525,988	242,774	169	169	7,525,988	23.10
05/29/24	NA			48.97	5580.60	-0.94	NA	9,393,193	313,106	217	217	9,393,193	28.83
06/26/24	NA			48.10	5581.47	0.87	NA	7,519,489	268,553	186	186	7,519,489	23.08
07/30/24	NA			32.42	5597.15	15.68	NA	9,992,494	293,897	204	204	9,992,494	30.67
08/29/24	NA			32.11	5597.46	0.31	NA	8,792,944	293,098	204	204	8,792,944	26.98
09/26/24	NA			36.49	5593.08	-4.38	NA	8,792,944	314,034	218	218	8,792,944	26.98
10/28/24	NA			39.97	5589.60	-3.48	NA	11,222,052	350,689	244	244	11,222,052	34.44
11/26/24	NA			42.20	5587.37	-2.23	NA	8,381,459	289,016	201	201	8,381,459	25.72
12/24/24	NA			44.08	5585.49	-1.88	NA	9,847,210	351,686	244	244	9,847,210	30.22
01/28/25	NA			47.00	5582.57	-2.92	NA	7,441,548	212,616	148	148	7,441,548	22.84
02/27/25	NA			49.39	5580.18	-2.39	NA	7,035,707	234,524	163	163	7,035,707	21.59
03/28/25	NA			51.09	5578.48	-1.70	NA	6,800,285	234,493	163	163	6,800,285	20.87
04/29/25	NA			52.53	5577.04	-1.44	NA	8,419,697	263,116	183	183	8,419,697	25.84
05/28/25	NA			39.60	5589.97	12.93	NA	6,794,168	234,282	163	163	6,794,168	20.85
06/27/25	NA			40.94	5588.63	-1.34	NA	7,117,893	237,263	165	165	7,117,893	21.84
07/29/25	NA			41.07	5588.50	-0.13	NA	9,704,371	303,262	211	211	9,704,371	29.78
08/26/25	NA			37.97	5591.60	3.10	NA	8,396,582	299,878	208	208	8,396,582	25.77
09/25/25	NA			39.47	5590.10	-1.50	NA	11,232,851	374,428	260	260	11,232,851	34.47
10/30/25	NA			40.41	5589.16	-0.94	NA	11,374,704	324,992	226	226	11,374,704	34.91
11/24/25	NA			41.33	5588.24	-0.92	NA	8,661,634	346,465	241	241	8,661,634	26.58
12/24/25	NA			42.67	5586.90	-1.34	NA	12,168,610	405,620	282	282	12,168,610	37.34
01/28/26	NA			44.84	5584.73	-2.17	NA	7,698,229	219,949	153	153	7,698,229	23.62
02/23/26	NA			46.48	5583.09	-1.64	NA	7,435,959	285,998	199	199	7,435,959	22.82
03/25/26	NA			48.56	5581.01	-2.08	NA	7,249,134	241,638	168	168	7,249,134	22.25

MP elevations  
changed 7/99  
(BMF96-1D)  
and 7/04  
(BMF96-4)

**Montana Bureau of Mines and Geology  
Butte Mine Flooding  
West Camp Water-Levels**

GWIC ID	Comments
Date	
	<p>01/26/21 Flow data from Pioneer records. Q~177 gpm.            02/25/21 Flow data from Pioneer records. Q~167 gpm.            03/30/21 Flow data from Pioneer records. Q~168 gpm.            05/03/21 Flow data from Pioneer records. Q~164 gpm.            05/26/21 Flow data from Pioneer records. Q~156 gpm.            06/25/21 Flow data from Pioneer records. Q~156 gpm.            07/27/21 Flow data from Pioneer records. Q~161 gpm.            08/30/21 Flow data from Pioneer records. Q~178 gpm.            10/01/21 Flow data from Pioneer records. Q~184 gpm.            10/29/21 Flow data from Pioneer records. Q~181 gpm.            11/30/21 Flow data from Pioneer records. Q~171 gpm.            12/29/21 Flow data from Pioneer records. Q~169 gpm.            01/26/22 Flow data from Pioneer records. Q~163 gpm.            02/22/22 Flow data from Pioneer records. Q~162 gpm.            03/28/22 Flow data from Pioneer records. Q~167 gpm.            04/25/22 Flow data from Pioneer records. Q~150 gpm.            05/25/22 Flow data from Pioneer records. Q~139 gpm.            06/27/22 Flow data from Pioneer records. Q~142 gpm.            07/26/22 Flow data from Pioneer records. Q~153 gpm.            08/25/22 Flow data from Pioneer records. Q~166 gpm.            09/29/22 Flow data from Pioneer records. Q~182 gpm.            10/26/22 Flow data from Pioneer records. Q~190 gpm.            11/28/22 Flow data from Pioneer records. Q~153 gpm.            12/29/22 Flow data from Pioneer records. Q~164 gpm.            01/26/23 Flow data from Pioneer records. Q~166 gpm.            02/27/23 Flow data from Pioneer records. Q~166 gpm.            03/28/23 Flow data from Pioneer records. Q~161 gpm.            04/24/23 Flow data from Pioneer records. Q~147 gpm.            05/28/23 Flow data from Pioneer records. Q~152 gpm.            06/28/23 Flow data from Pioneer records. Q~123 gpm.            07/28/23 Flow data from Pioneer records. Q~198 gpm.            08/28/23 Flow data from Pioneer records. Q~241 gpm.            09/27/23 Flow data from Pioneer records. Q~263 gpm.            10/25/23 Flow data from Pioneer records. Q~226 gpm.            11/28/23 Flow data from Pioneer records. Q~241 gpm.            12/28/23 Flow data from Pioneer records. Q~239 gpm.            01/29/24 Flow data from Pioneer records. Q~212 gpm.            02/27/24 Flow data from Pioneer records. Q~203 gpm.            03/29/24 Flow data from Pioneer records. Q~192 gpm.            04/29/24 Flow data from Pioneer records. Q~187 gpm.            05/29/24 Flow data from Pioneer records. Q~192 gpm.            06/26/24 Flow data from Pioneer records. Q~186 gpm.            07/30/24 Flow data from Pioneer records. Q~198 gpm.            08/29/24 Flow data from Pioneer records. Q~218 gpm.            09/26/24 Flow data from Pioneer records. Q~223 gpm.            10/28/24 Flow data from Pioneer records. Q~222 gpm.            11/26/24 Flow data from Pioneer records. Q~208 gpm.            12/24/24 Flow data from Pioneer records. Q~195 gpm.            01/28/25 Flow data from Pioneer records. Q~191 gpm.            02/27/25 Flow data from Pioneer records. Q~174 gpm.            03/28/25 Flow data from Pioneer records. Q~169 gpm.            04/29/25 Flow data from Pioneer records. Q~167 gpm.            05/28/25 Flow data from Pioneer records. Q~169 gpm.            06/27/25 Flow data from Pioneer records. Q~177 gpm.            07/29/25 Flow data from Pioneer records. Q~194 gpm.            08/26/25 Flow data from Pioneer records. Q~208 gpm.            09/25/25 Flow data from Pioneer records. Q~229 gpm.            10/30/25 Flow data from Pioneer records. Q~224 gpm.            11/24/25 Flow data from Pioneer records. Q~215 gpm.            12/24/25 Flow data from Pioneer records. Q~200 gpm.            01/28/26 Flow data from Pioneer records. Q~191 gpm.            02/23/26 Flow data from Pioneer records. Q~184 gpm.            03/25/26 Flow data from Pioneer records. Q~180 gpm.</p>
MP elevations changed 7/99 (BMF96-1D) and 7/04 (BMF96-4)	

MBMG Outer Camp																	
GWIC ID	4732				4725				892116				4822				
DATE	MAS	Elev	Diff	MAS	Well	Elev	Diff	S-4	Tech Well	Elev	Diff	Tech Well	Orphan Boy	Elev	Diff	Orphan Boy	
(mmddyy)	SWL (ft)	(ft)	(ft)	Yearly	S-4	(ft)	(ft)	Yearly	SWL (ft)	(ft)	(ft)	Yearly	SWL (ft)	(ft)	(ft)	Yearly	
				Change	SWL (ft)			Change				Change				Change	
		6304.00				6290				5650.00	5651.86			5689.66	5691.25		
01/29/24	70.34	6233.66	-0.35		49.76	6240.24	-0.30		75.04	5576.82	-2.75		110.65	5580.60	-0.57		
02/27/24	70.67	6233.33	-0.33		NR				74.63	5577.23	0.41		109.85	5581.40	0.80		
03/31/24	70.89	6233.11	-0.22		50.03	6239.97	-0.27		73.57	5578.29	1.06		108.75	5582.50	1.10		
04/29/24	70.31	6233.69	0.58		49.77	6240.23	0.26		72.62	5579.24	0.95		107.71	5583.54	1.04		
05/28/24	70.12	6233.88	0.19		49.42	6240.58	0.35		74.84	5577.02	-2.22		110.31	5580.94	-2.60		
06/30/24	70.16	6233.84	-0.04		49.23	6240.77	0.19		75.69	5576.17	-0.85		111.70	5579.55	-1.39		
07/29/24	70.45	6233.55	-0.29		49.12	6240.88	0.11		76.15	5575.71	-0.46		112.59	5578.66	-0.89		
08/31/24	70.73	6233.27	-0.28		49.09	6240.91	0.03		76.15	5575.71	0.00		111.31	5579.94	1.28		
09/25/24	71.08	6232.92	-0.35		49.15	6240.85	-0.06		73.88	5577.98	2.27		110.59	5580.66	0.72		
10/26/24	71.58	6232.42	-0.50		49.38	6240.62	-0.23		75.46	5576.40	-1.58		112.43	5578.82	-1.84		
11/26/24	72.06	6231.94	-0.48		49.77	6240.23	-0.39		76.40	5575.46	-0.94		113.20	5578.05	-0.77		
12/23/24	72.51	6231.49	-0.45		50.08	6239.92	-0.31		75.75	5576.11	0.65		111.72	5579.53	1.48		
<b>Yearly Change</b>				<b>-2.52</b>				<b>-0.62</b>				<b>-3.46</b>				<b>-1.64</b>	
01/28/25	73.18	6230.82	-0.67		50.53	6239.47	-0.45		75.20	5576.66	0.55		110.91	5580.34	0.81		
02/27/25	73.66	6230.34	-0.48		NA				75.14	5576.72	0.06		110.52	5580.73	0.39		
03/31/25	73.96	6230.04	-0.30		51.46	6238.54	-0.93		75.06	5576.80	0.08		110.46	5580.79	0.06		
04/28/25	74.26	6229.74	-0.30		52.00	6238.00	-0.54		74.87	5576.99	0.19		110.27	5580.98	0.19		
05/28/25	74.53	6229.47	-0.27		52.55	6237.45	-0.55		76.04	5575.82	-1.17		111.77	5579.48	-1.50		
06/30/25	74.69	6229.31	-0.16		53.00	6237.00	-0.45		75.63	5576.23	0.41		111.10	5580.15	0.67		
07/29/25	74.88	6229.12	-0.19		53.37	6236.63	-0.37		75.55	5576.31	0.08		111.09	5580.16	0.01		
08/31/25	75.26	6228.74	-0.38		53.69	6236.31	-0.32		74.95	5576.91	0.60		111.17	5580.08	-0.08		
09/24/25	75.52	6228.48	-0.26		53.82	6236.18	-0.13		74.29	5577.57	0.66		110.92	5580.33	0.25		
10/26/25	75.88	6228.12	-0.36		54.05	6235.95	-0.23		74.84	5577.02	-0.55		111.93	5579.32	-1.01		
11/26/25	76.06	6227.94	-0.18		54.24	6235.76	-0.19		74.98	5576.88	-0.14		111.67	5579.58	0.26		
12/23/25	76.27	6227.73	-0.21		54.39	6235.61	-0.15		75.14	5576.72	-0.16		111.42	5579.83	0.25		
<b>Yearly Change</b>				<b>-3.76</b>	<b>-3.76</b>			<b>-4.31</b>	<b>-4.31</b>			<b>0.61</b>	<b>0.61</b>			<b>0.30</b>	<b>0.30</b>
01/28/26	76.77	6227.23	-0.50		54.86	6235.14	-0.47		75.55	5576.31	-0.41		111.58	5579.67	-0.16		
02/23/26	76.94	6227.06	-0.17		55.02	6234.98	-0.16		76.26	5575.60	-0.71		112.27	5578.98	-0.69		
03/31/26	77.16	6226.84	-0.22		55.30	6234.70	-0.28		76.62	5575.24	-0.36		112.28	5578.97	-0.01		
04/28/26																	
05/28/26																	
06/30/26																	
07/29/26																	
08/31/26																	
09/24/26																	
10/26/26																	
11/26/26																	
12/23/26																	
<b>Yearly Change</b>				<b>-0.89</b>				<b>-0.91</b>				<b>-1.48</b>				<b>-0.86</b>	

Orphan Boy Mine elevation changed following February 2005 survey, due to installation of casing into mine shaft for monitoring purposes.

## Butte Mine Flooding Outer Camp Water-Levels

Periodic Monitoring

ORPHAN BOY AREA

DATE (mmddyy)	Orphan Boy SWL(ft)	Orphan Boy		Yearly Change	Seep Flow (gpm)	Yearly Average (gpm)
		Elevation* (ft)	Mo. Diff. (ft)			
		<b>5689.66</b>	<b>5691.25</b>			
01/24/22	110.41	5580.84	-0.18		47	
02/18/22	110.61	5580.64	-0.20		40	
03/31/22	110.70	5580.55	-0.09		28	
04/27/22	110.85	5580.40	-0.15		28	
05/25/22	110.99	5580.26	-0.14		34	
06/30/22	110.98	5580.27	0.01		34	
07/29/22	110.95	5580.30	0.03		31	
08/31/22	111.01	5580.24	-0.06		19	
09/28/22	111.01	5580.24	0.00		19	
10/26/22	110.98	5580.27	0.03		19	
11/28/22	111.90	5579.35	-0.92		23	
12/29/22	111.30	5579.95	0.60	<b>-1.07</b>	26	28.8
01/26/23	111.72	5579.53	-0.42		23	
02/27/23	111.87	5579.38	-0.15		16	
03/31/23	112.21	5579.04	-0.34		28	
04/24/23	111.94	5579.31	0.27		16	
05/25/23	111.36	5579.89	0.58		21	
06/30/23	110.99	5580.26	0.37		26	
07/29/23	110.81	5580.44	0.18		63	
08/31/23	109.79	5581.46	1.02		51	
09/27/23	109.15	5582.10	0.64		59	
10/26/23	109.15	5582.10	0.00		59	
11/28/23	109.90	5581.35	-0.75		77	
12/29/23	110.08	5581.17	-0.18	<b>1.22</b>	82	43.4
01/29/24	110.65	5580.60	-0.57		77	
02/27/24	109.85	5581.40	0.80		140	
03/31/24	108.75	5582.50	1.10		98	
04/29/24	107.71	5583.54	1.04		135	
05/28/24	110.31	5580.94	-2.60		156	
06/30/24	111.70	5579.55	-1.39		128	
07/29/24	112.59	5578.66	-0.89		135	
08/31/24	111.31	5579.94	1.28		164	
09/25/24	110.59	5580.66	0.72		195	
10/26/24	112.43	5578.82	-1.84		213	
11/26/24	113.20	5578.05	-0.77		231	
12/23/24	111.72	5579.53	1.48	<b>-1.64</b>	250	160.2
01/28/25	110.91	5580.34	0.81		290	
02/27/25	110.52	5580.73	0.39		270	
03/31/25	110.46	5580.79	0.06		346	
04/28/25	110.27	5580.98	0.19		335	
05/28/25	111.77	5579.48	-1.50		44	
06/30/25	111.10	5580.15	0.67		51	
07/29/25	111.09	5580.16	0.01		51	
08/31/25	111.17	5580.08	-0.08		68	
09/24/25	110.92	5580.33	0.25		77	
10/26/25	111.93	5579.32	-1.01		59	
11/26/25	111.67	5579.58	0.26		21	
12/23/25	111.42	5579.83	0.25		21	136.1
01/28/26	111.58	5579.67	-0.16		21	
02/23/26	112.27	5578.98	-0.69		37	
03/31/26	112.28	5578.97	-0.01		37	